

Anti-IDH1 antibody (1-414) (STJ115211)

STJ115211

GENERAL INFORMATION

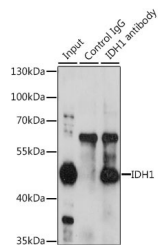
Product Type	Primary antibodies
Short Description	
Applications	WB/IF/ICC/IP/ELISA
Host/Source	Rabbit
Reactivity	Human/Mouse/Rat

PRODUCT PROPERTIES

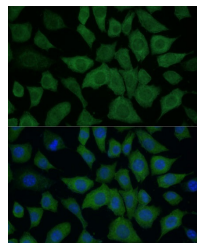
Clonality	Polyclonal
Clone ID	
Concentration	Lot specific
Conjugation	Unconjugated
Purification	Affinity purification
Dilution	WB:1:500-1:1000
Range	IF/ICC:1:50-1:200
	IP:0.5 Mu g-4 Mu g antibody for 200 Mu g-400 Mu g extracts of whole cells
	ELISA:Recommended starting concentration is 1 Mu g/mL. Please optimize the concentration based on your specific assay requirements
Formulation	PBS with 0.01% Thimerosal, 50% Glycerol, pH 7.3.
Isotype	IgG
Storage	Store at -20°C for up to 1 year from the date of receipt, and avoid repeat freeze-thaw cycles.
Instruction	

TARGET INFORMATION

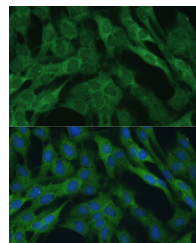
Gene ID	3417
Gene Symbol	IDH1
Uniprot ID	IDHC_HUMAN
Immunogen	
Region	1-414
Specificity	Recombinant fusion protein containing a sequence corresponding to amino acids 1-414 of human IDH1 (NP_005887.2).
Immunogen Sequence	MSKKISGGSVVEMQGDENR IIVELIKEKLIFPYVELDLH SYDLGIENRDATNDQVTKDA AEAIKKHNVGVKCATITPDE KRVEEFKLKQMWKSPNGTIR NILGGTVFREAICKNIPRL VSGWVKPIIGRHAYGDQYR ATDFVVPGPVKVEITYTPSD GTQKVTYLVHNFEEGGGVAM GMYNQDKSIEDFAHSSFQMA LSKGWPLYLSTKNTILKKYD GRFKDIFQEYDKQYKSQF



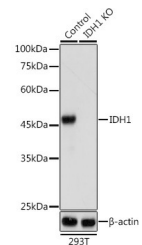
Immunoprecipitation analysis of 200 Mu g extracts of HeLa cells, using 3 Mu g IDH1 antibody (STJ115211). Western blot was performed from the immunoprecipitate using IDH1 antibody (STJ115211) at a dilution of 1:1000.



Immunofluorescence analysis of L929 cells using [KO Validated] IDH1 Rabbit polyclonal antibody (STJ115211) at dilution of 1:100 (40x lens). Secondary antibody: Cy3 Goat Anti-Rabbit IgG (H+L) at 1:500 dilution. Blue: DAPI for nuclear staining.



Immunofluorescence analysis of C6 cells using [KO Validated] IDH1 Rabbit polyclonal antibody (STJ115211) at dilution of 1:100 (40x lens). Secondary antibody: Cy3 Goat Anti-Rabbit IgG (H+L) at 1:500 dilution. Blue: DAPI for nuclear staining.



Western blot analysis of lysates from wild type (WT) and IDH1 knockout (KO) 293T cells, using [KO Validated] IDH1 Rabbit polyclonal antibody (STJ115211) at 1:1000 dilution. Secondary antibody: HRP Goat Anti-Rabbit IgG (H+L) (STJ5000856) at 1:10000 dilution. Lysates/proteins: 25 Mu g per lane. Blocking buffer: 3% nonfat dry milk in TBST. Detection: ECL Basic Kit. Exposure time: 60s.

This product is suitable for in-vitro studies under the RESEARCH USE ONLY [RUO] licence. This product must not be used as for diagnostic or other medical purposes.
St John's Laboratory Ltd, Knowledge Dock Business Centre, University Way, London, E16 2RD | Tel: 0208 223 3081