

Anti-MRPL45 antibody (57-306) (STJ115163)

STJ115163

GENERAL INFORMATION

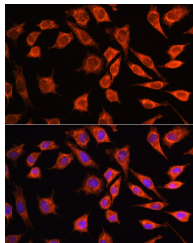
Product Type	Primary antibodies
Short Description	
Applications	WB/IHC-P/IF/ICC/ELISA
Host/Source	Rabbit
Reactivity	Human/Mouse/Rat

PRODUCT PROPERTIES

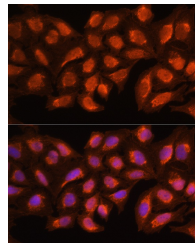
Clonality	Polyclonal
Clone ID	
Concentration	Lot specific
Conjugation	Unconjugated
Purification	Affinity purification
Dilution	WB:1:500-1:2000
Range	IHC-P:1:50-1:200 IF/ICC:1:50-1:200 ELISA:Recommended starting concentration is 1 µg/mL. Please optimize the concentration based on your specific assay requirements.
Formulation	PBS with 0.01% Thimerosal, 50% Glycerol, pH 7.3.
Isotype	IgG
Storage	Store at -20°C for up to 1 year from the date of receipt, and avoid repeat freeze-thaw cycles.
Instruction	

TARGET INFORMATION

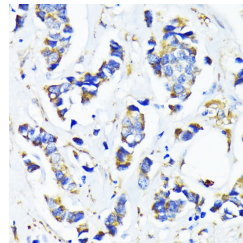
Gene ID	
Gene Symbol	MRPL45
Uniprot ID	RM45_HUMAN
Immunogen	
Immunogen Region	57-306
Specificity	Recombinant fusion protein containing a sequence corresponding to amino acids 57-306 of human MRPL45 (NP_115727.5).
Immunogen Sequence	MQHARKAGLVIPPEKSDRSI HLACTAGIFDAYVPPEGDAR ISSLSKEGLIERTERMKKTAM ASQVSIRRIKDYDANFKIKD FPEKAKDIFIEAHLCLNNSD HDRLHTLVTEHCDFDMDTWDI KYKTVRWSFVESLEPSHWQ VRCSSMMNQGNVYGQITVRM HTRQTLAIYDRFGRMLMYGQE DVPKDVLEYVFEKQLTNPY GSWRMHTKIVPPWAPPKQPI LKTMVMPGQLKPEEYEE



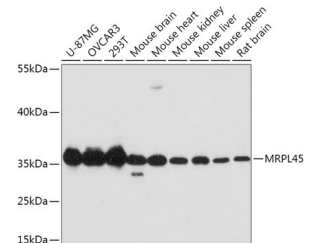
Immunofluorescence analysis of L929 cells using MRPL45 Rabbit polyclonal antibody (STJ115163) at dilution of 100 (40x lens). Secondary antibody: Cy3 Goat Anti-Rabbit IgG (H+L) at 1:500 dilution. Blue: DAPI for nuclear staining.



Immunofluorescence analysis of HeLa cells using MRPL45 Rabbit polyclonal antibody (STJ115163) at dilution of 100 (40x lens). Secondary antibody: Cy3 Goat Anti-Rabbit IgG (H+L) at 1:500 dilution. Blue: DAPI for nuclear staining.



Immunohistochemistry analysis of MRPL45 in paraffin-embedded human breast cancer using MRPL45 Rabbit polyclonal antibody (STJ115163) at dilution of 1:100 (40x lens). Perform microwave antigen retrieval with 10 mM PBS buffer pH 7.2 before commencing with immunohistochemistry staining protocol.



Western blot analysis of various lysates using MRPL45 Rabbit polyclonal antibody (STJ115163) at 1:1000 dilution. Secondary antibody: HRP Goat Anti-Rabbit IgG (H+L) (STJ5000856) at 1:10000 dilution. Lysates/proteins: 25 µg per lane. Blocking buffer: 3% nonfat dry milk in TBST. Detection: ECL Basic Kit. Exposure time: 90s.

This product is suitable for in-vitro studies under the RESEARCH USE ONLY [RUO] licence. This product must not be used as for diagnostic or other medical purposes.
St John's Laboratory Ltd, Knowledge Dock Business Centre, University Way, London, E16 2RD | Tel: 0208 223 3081