

Anti-CTSG antibody (75-190) (STJ115138)
STJ115138

GENERAL INFORMATION

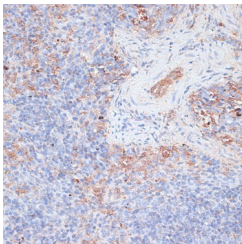
Product Type	Primary antibodies
Short Description	
Applications	WB/IHC-P/ELISA
Host/Source	Rabbit
Reactivity	Human/Mouse/Rat

PRODUCT PROPERTIES

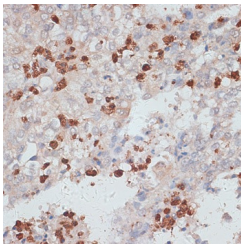
Clonality	Polyclonal
Clone ID	
Concentration	Lot specific
Conjugation	Unconjugated
Purification	Affinity purification
Dilution Range	WB:1:500-1:2000 IHC-P:1:50-1:100 ELISA:Recommended starting concentration is 1 µg/mL. Please optimize the concentration based on your specific assay requirements.
Formulation	PBS with 0.01% Thimerosal, 50% Glycerol, pH 7.3.
Isotype	IgG
Storage Instruction	Store at -20°C for up to 1 year from the date of receipt, and avoid repeat freeze-thaw cycles.

TARGET INFORMATION

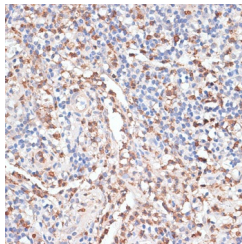
Gene ID	1511
Gene Symbol	CTSG
Uniprot ID	CATG_HUMAN
Immunogen	
Immunogen Region	75-190
Specificity	Recombinant fusion protein containing a sequence corresponding to amino acids 75-190 of human Cathepsin G (NP_001902.1).
Immunogen Sequence	GAHNIQRRRENTQQHITARRA IRHPQYNQRTIQNDIMLLQL SRRVRRNRNVNPVALPRAQE GLRPGTLCTVAGWGRVSMRR GTDTLREVQLRVQRDRQCLR IFGSYDPRRQICVGDR



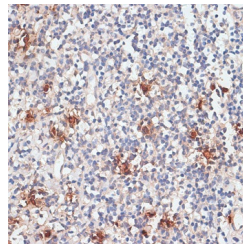
Immunohistochemistry analysis of Cathepsin G in paraffin-embedded mouse spleen using Cathepsin G Rabbit polyclonal antibody (STJ115138) at dilution of 1:100 (40x lens). Perform microwave antigen retrieval with 10 mM PBS buffer pH 7.2 before commencing with immunohistochemistry staining protocol.



Immunohistochemistry analysis of Cathepsin G in paraffin-embedded human uterine cancer using Cathepsin G Rabbit polyclonal antibody (STJ115138) at dilution of 1:100 (40x lens). Perform microwave antigen retrieval with 10 mM PBS buffer pH 7.2 before commencing with immunohistochemistry staining protocol.



Immunohistochemistry analysis of Cathepsin G in paraffin-embedded human appendix using Cathepsin G Rabbit polyclonal antibody (STJ115138) at dilution of 1:100 (40x lens). Perform microwave antigen retrieval with 10 mM PBS buffer pH 7.2 before commencing with immunohistochemistry staining protocol.



Immunohistochemistry analysis of Cathepsin G in paraffin-embedded human tonsil using Cathepsin G Rabbit polyclonal antibody (STJ115138) at dilution of 1:100 (40x lens). Perform microwave antigen retrieval with 10 mM PBS buffer pH 7.2 before commencing with immunohistochemistry staining protocol.

This product is suitable for in-vitro studies under the RESEARCH USE ONLY [RUO] licence. This product must not be used as for diagnostic or other medical purposes.
St John's Laboratory Ltd, Knowledge Dock Business Centre, University Way, London, E16 2RD | Tel: 0208 223 3081