

Anti-RBM14 antibody (110-220) (STJ115125)

STJ115125

GENERAL INFORMATION

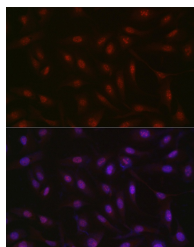
| | |
|--------------------------|--------------------|
| Product Type | Primary antibodies |
| Short Description | |
| Applications | WB/IF/ICC/ELISA |
| Host/Source | Rabbit |
| Reactivity | Human/Mouse/Rat |

PRODUCT PROPERTIES

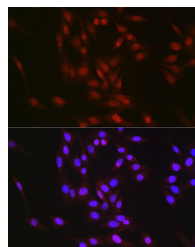
| | |
|----------------------------|--|
| Clonality | Polyclonal |
| Clone ID | |
| Concentration | Lot specific |
| Conjugation | Unconjugated |
| Purification | Affinity purification |
| Dilution Range | WB:1:500-1:1000 IF/ICC:1:100-1:500 ELISA:Recommended starting concentration is 1 µg/mL. Please optimize the concentration based on your specific assay requirements. |
| Formulation | PBS with 0.01% Thimerosal, 50% Glycerol, pH 7.3. |
| Isotype | IgG |
| Storage Instruction | Store at -20°C for up to 1 year from the date of receipt, and avoid repeat freeze-thaw cycles. |

TARGET INFORMATION

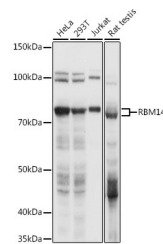
| | |
|---------------------------|--|
| Gene ID | 100526737/10432 |
| Gene Symbol | RBM14 |
| Uniprot ID | RBM14_HUMAN |
| Immunogen | |
| Immunogen Region | 110-220 |
| Specificity | Recombinant fusion protein containing a sequence corresponding to amino acids 110-220 of human RBM14 (NP_006319.1). |
| Immunogen Sequence | VVKDYAFVHMEKEADAKAAI AQLNGKEVKGKRINVELSTK GQKKGPGLAVQSGDKTKKPG AGDTAFPGTGGFSATFDYQQ AFGNSTGGFDGQARQPTPPF FGRDRSPLRRS |



Immunofluorescence analysis of U2OS cells using RBM14 Rabbit polyclonal antibody (STJ115125) at dilution of 1:300 (40x lens). Secondary antibody: Cy3 Goat Anti-Rabbit IgG (H+L) at 1:500 dilution. Blue: DAPI for nuclear staining.



Immunofluorescence analysis of NIH/3T3 cells using RBM14 Rabbit polyclonal antibody (STJ115125) at dilution of 1:300 (40x lens). Secondary antibody: Cy3 Goat Anti-Rabbit IgG (H+L) at 1:500 dilution. Blue: DAPI for nuclear staining.



Western blot analysis of various lysates using RBM14 Rabbit polyclonal antibody (STJ115125) at 1:1000 dilution. Secondary antibody: HRP Goat Anti-Rabbit IgG (H+L) (ST/S000856) at 1:10000 dilution. Lysates/proteins: 25 µg per lane. Blocking buffer: 3% nonfat dry milk in TBST. Detection: ECL Basic Kit. Exposure time: 1s.