

Anti-BET1 antibody (1-94) (STJ115036)

STJ115036

GENERAL INFORMATION

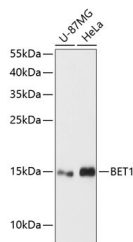
Product Type	Primary antibodies
Short Description	
Applications	WB/ELISA
Host/Source	Rabbit
Reactivity	Human

PRODUCT PROPERTIES

Clonality	Polyclonal
Clone ID	
Concentration	Lot specific
Conjugation	Unconjugated
Purification	Affinity purification
Dilution Range	WB:1:500-1:2000 ELISA:Recommended starting concentration is 1 μ g/mL. Please optimize the concentration based on your specific assay requirements.
Formulation	PBS with 0.01% Thimerosal, 50% Glycerol, pH 7.3.
Isotype	IgG
Storage Instruction	Store at -20°C for up to 1 year from the date of receipt, and avoid repeat freeze-thaw cycles.

TARGET INFORMATION

Gene ID	10282
Gene Symbol	BET1
Uniprot ID	BET1_HUMAN
Immunogen	
Immunogen Region	1-94
Specificity	Recombinant fusion protein containing a sequence corresponding to amino acids 1-94 of human BET1 (NP_005859.1).
Immunogen Sequence	MRRAGLGEGVPPGNYGNYGY ANSGYSACEEENERLTESLR SKVTAIKSLSIEIGHEVKTK NKLLAEMDSQFDSTTGFLGK TMGKLKILSRGSQT



Western blot analysis of various lysates using BET1 Rabbit polyclonal antibody (STJ115036) at 1:3000 dilution. Secondary antibody: HRP Goat Anti-Rabbit IgG (H+L) (STJS000856) at 1:10000 dilution. Lysates/proteins: 25 μ g per lane. Blocking buffer: 3% nonfat dry milk in TBST. Detection: ECL Basic Kit. Exposure time: 90s.

This product is suitable for in-vitro studies under the RESEARCH USE ONLY [RUO] licence. This product must not be used as for diagnostic or other medical purposes.
St John's Laboratory Ltd, Knowledge Dock Business Centre, University Way, London, E16 2RD | Tel: 0208 223 3081