

Anti-CRHBP antibody (221-322) (STJ114994)

STJ114994

GENERAL INFORMATION

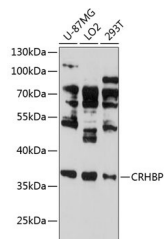
Product Type	Primary antibodies
Short Description	
Applications	WB/ELISA
Host/Source	Rabbit
Reactivity	Human

PRODUCT PROPERTIES

Clonality	Polyclonal
Clone ID	
Concentration	Lot specific
Conjugation	Unconjugated
Purification	Affinity purification
Dilution Range	WB:1:500-1:2000 ELISA:Recommended starting concentration is 1 μ g/mL. Please optimize the concentration based on your specific assay requirements.
Formulation	PBS with 0.01% Thimerosal, 50% Glycerol, pH 7.3.
Isotype	IgG
Storage	Store at -20°C for up to 1 year from the date of receipt, and avoid repeat freeze-thaw cycles.
Instruction	

TARGET INFORMATION

Gene ID	1393
Gene Symbol	CRHBP
Uniprot ID	CRHBP_HUMAN
Immunogen	
Region	221-322
Specificity	Recombinant fusion protein containing a sequence corresponding to amino acids 221-322 of human CRHBP (NP_001873.2).
Immunogen Sequence	TLGHVNLQLKKSSAGCEGI GDFVELLGGTGLDPSKMTPL ADLCYPFHGPAQMKVGCNT VVRMVSSGKHVNRVTFEYRQ LEPYELENPNGNSIGFCLS GL



Western blot analysis of extracts of various cell lines, using CRHBP antibody (STJ114994) at 1:3000 dilution. Secondary antibody: HRP Goat Anti-rabbit IgG (H+L) at 1:10000 dilution. Lysates/proteins: 25 μ g per lane. Blocking buffer: 3% nonfat dry milk in TBST. Detection: ECL Enhanced Kit. Exposure time: 30s.

This product is suitable for in-vitro studies under the RESEARCH USE ONLY [RUO] licence. This product must not be used as for diagnostic or other medical purposes.
St John's Laboratory Ltd, Knowledge Dock Business Centre, University Way, London, E16 2RD | Tel: 0208 223 3081