

Anti-FLNC antibody (2160-2340) (STJ114985)

STJ114985

GENERAL INFORMATION

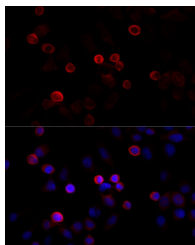
| | |
|--------------------------|--------------------|
| Product Type | Primary antibodies |
| Short Description | |
| Applications | WB/IF/ICC/ELISA |
| Host/Source | Rabbit |
| Reactivity | Human/Mouse |

PRODUCT PROPERTIES

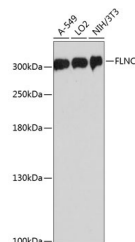
| | |
|----------------------------|----------------------------------------------------------------------------------------------------------------------------------------|
| Clonality | Polyclonal |
| Clone ID | |
| Concentration | Lot specific |
| Conjugation | Unconjugated |
| Purification | Affinity purification |
| Dilution | WB:1:500-1:2000 |
| Range | IF/CC:1:50-1:200 |
| | ELISA:Recommended starting concentration is 1 μ g/mL. Please optimize the concentration based on your specific assay requirements. |
| Formulation | PBS with 0.01% Thimerosal, 50% Glycerol, pH 7.3. |
| Isotype | IgG |
| Storage Instruction | Store at -20°C for up to 1 year from the date of receipt, and avoid repeat freeze-thaw cycles. |

TARGET INFORMATION

| | |
|---------------------------|----------------------------------------------------------------------------------------------------------------------------------------------------------------------------------------------------|
| Gene ID | 2318 |
| Gene Symbol | FLNC |
| Uniprot ID | FLNC_HUMAN |
| Immunogen | |
| Immunogen Region | 2160-2340 |
| Specificity | Recombinant fusion protein containing a sequence corresponding to amino acids 2160-2340 of human FLNC (NP_001449.3). |
| Immunogen Sequence | IPGNWFQMVSQAERLRTFT RSSHTYTRTERTEISKTRGG ETKREVRVEESTQVGGDPFP AVFGDFLGRERLGSFGSITR QQEGEASSQDMTAQVTSPSG KVEAAEIVEGEDSAYSVRV PQEMGPHTVAVKYRGQHVPG SPFQFTVGPLGEGGAHKVRA GGTGLERGVAGVPAEFSIWT R |



Immunofluorescence analysis of HeLa cells using FLNC Rabbit polyclonal antibody (STJ114985) at dilution of 1:100 (40x lens). Secondary antibody: Cy3 Goat Anti-Rabbit IgG (H+L) at 1:500 dilution. Blue: DAPI for nuclear staining.



Western blot analysis of various lysates using FLNC Rabbit polyclonal antibody (STJ114985) at 1:3000 dilution. Secondary antibody: HRP Goat Anti-Rabbit IgG (H+L) (STJ5000856) at 1:10000 dilution. Lysates/proteins: 25 μ g per lane. Blocking buffer: 3% nonfat dry milk in TBST. Detection: ECL Basic Kit. Exposure time: 1s.

This product is suitable for in-vitro studies under the RESEARCH USE ONLY [RUO] licence. This product must not be used as for diagnostic or other medical purposes.

St John's Laboratory Ltd, Knowledge Dock Business Centre, University Way, London, E16 2RD | Tel: 0208 223 3081