

Anti-TNFRSF11A antibody (466-616) (STJ114966)

STJ114966

GENERAL INFORMATION

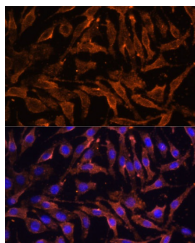
Product Type	Primary antibodies
Short Description	
Applications	WB/IHC-P/IF/ICC/ELISA
Host/Source	Rabbit
Reactivity	Human/Mouse/Rat

PRODUCT PROPERTIES

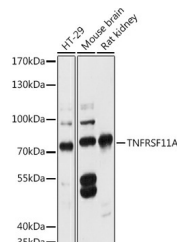
Clonality	Polyclonal
Clone ID	
Concentration	Lot specific
Conjugation	Unconjugated
Purification	Affinity purification
Dilution	WB:1:1000-1:5000
Range	IHC-P:1:100-1:100 IF/ICC:1:50-1:100 ELISA:Recommended starting concentration is 1 Mu g/mL. Please optimize the concentration based on your specific assay requirements.
Formulation	PBS with 0.01% Thimerosal, 50% Glycerol, pH 7.3.
Isotype	IgG
Storage	Store at -20°C for up to 1 year from the date of receipt, and avoid repeat freeze-thaw cycles.
Instruction	

TARGET INFORMATION

Gene ID	8792
Gene Symbol	TNFRSF11A
Uniprot ID	TNR11_HUMAN
Immunogen	
Region	466-616
Specificity	Recombinant fusion protein containing a sequence corresponding to amino acids 466-616 of human TNFRSF11A (NP_003830.1).
Immunogen Sequence	RGPLPQCAYGMGLPPEEEAS RTEARDQPEDGADGRLPSSA RAGAGSGSSPGGQSPASGNV TGNSNSTFISSGQVMNFKGD IIVVYSQTSQEGAAAAAEP MGRPVEETLARRDSFAGNG PRFPDPCGGPEGLREPEKAS RPVQEQGGA



Immunofluorescence analysis of L929 cells using TNFRSF11A Rabbit polyclonal antibody (STJ114966) at dilution of 1:100 (40x lens). Secondary antibody: Cy3 Goat Anti-Rabbit IgG (H+L) at 1:500 dilution. Blue: DAPI for nuclear staining.



Western blot analysis of various lysates using TNFRSF11A Rabbit polyclonal antibody (STJ114966) at 1:3000 dilution. Secondary antibody: HRP Goat Anti-Rabbit IgG (H+L) (STJ5000856) at 1:10000 dilution. Lysates/proteins: 25 Mu g per lane. Blocking buffer: 3% nonfat dry milk in TBST. Detection: ECL Basic Kit. Exposure time: 30s.

This product is suitable for in-vitro studies under the RESEARCH USE ONLY [RUO] licence. This product must not be used as for diagnostic or other medical purposes.
St John's Laboratory Ltd, Knowledge Dock Business Centre, University Way, London, E16 2RD | Tel: 0208 223 3081