

Anti-AIF1 antibody (1-147) (STJ114929)

STJ114929

GENERAL INFORMATION

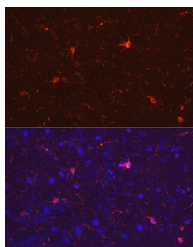
Product Type	Primary antibodies
Short Description	
Applications	WB/IF/ICC/ELISA
Host/Source	Rabbit
Reactivity	Human/Mouse/Rat

PRODUCT PROPERTIES

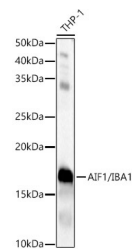
Clonality	Polyclonal
Clone ID	
Concentration	Lot specific
Conjugation	Unconjugated
Purification	Affinity purification
Dilution	WB:1:1000-1:5000
Range	IF/CC:1:50-1:200
	ELISA:Recommended starting concentration is 1 Mu g/mL. Please optimize the concentration based on your specific assay requirements.
Formulation	PBS with 0.05% Proclin300, 50% Glycerol, pH 7.3.
Isotype	IgG
Storage	Store at -20°C for up to 1 year from the date of receipt, and avoid repeat freeze-thaw cycles.
Instruction	

TARGET INFORMATION

Gene ID	199
Gene Symbol	AIF1
Uniprot ID	AIF1_HUMAN
Immunogen	
Immunogen Region	1-147
Specificity	Recombinant fusion protein containing a sequence corresponding to amino acids 1-147 of human AIF1/IBA1 (NP_001614.3).
Immunogen Sequence	MSQTRDLQGGKAFGLLKAQQ EERLDEINKQFLDDPKYSSD EDLPSKLEGFKEKYMFDLN GNGDIDIMSLKRMLEKLGVP KTHLELKKLIGEVSSGSGET FSYPDFLRMMLGKRSAILKM ILMYEEKAREKEKPTGPPAK KAISELP



Immunofluorescence analysis of paraffin-embedded rat brain using AIF1/IBA1 Rabbit polyclonal antibody (STJ114929) at dilution of 1:50 (40x lens). Secondary antibody: Cy3 Goat Anti-Rabbit IgG (H+L) at 1:500 dilution. Blue: DAPI for nuclear staining.



Western blot analysis of lysates from THP-1 cells, using AIF1/IBA1 Rabbit polyclonal antibody (STJ114929) at 1:2000 dilution. Secondary antibody: HRP Goat Anti-Rabbit IgG (H+L) (STJS000856) at 1:10000 dilution. Lysates/proteins: 25ug per lane. Blocking buffer: 3% nonfat dry milk in TBST. Detection: ECL Basic Kit. Exposure time: 30s.

This product is suitable for in-vitro studies under the RESEARCH USE ONLY [RUO] licence. This product must not be used as for diagnostic or other medical purposes.
St John's Laboratory Ltd, Knowledge Dock Business Centre, University Way, London, E16 2RD | Tel: 0208 223 3081