

**Anti-ACTA2 antibody (1-377) (STJ114915)**  
STJ114915

**GENERAL INFORMATION**

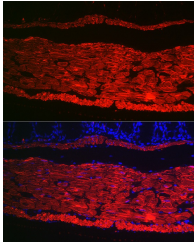
<b>Product Type</b>	Primary antibodies
<b>Short Description</b>	
<b>Applications</b>	WB/IHC-P/IF/ICC/ELISA
<b>Host/Source</b>	Rabbit
<b>Reactivity</b>	Human/Mouse/Rat

**PRODUCT PROPERTIES**

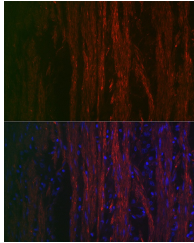
<b>Clonality</b>	Polyclonal
<b>Clone ID</b>	
<b>Concentration</b>	Lot specific
<b>Conjugation</b>	Unconjugated
<b>Purification</b>	Affinity purification
<b>Dilution Range</b>	WB:1:500-1:1000 IHC-P:1:500-1:1000 IF/ICC:1:50-1:200 ELISA:Recommended starting concentration is 1 Mu g/mL. Please optimize the concentration based on your specific assay requirements.
<b>Formulation</b>	PBS with 0.05% Proclin300, 50% Glycerol, pH 7.3.
<b>Isotype</b>	IgG
<b>Storage</b>	Store at -20°C for up to 1 year from the date of receipt, and avoid repeat freeze-thaw cycles.
<b>Instruction</b>	

**TARGET INFORMATION**

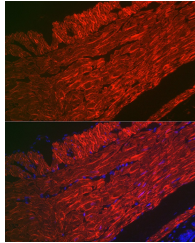
<b>Gene ID</b>	59
<b>Gene Symbol</b>	ACTA2
<b>Uniprot ID</b>	ACTA_HUMAN
<b>Immunogen</b>	
<b>Immunogen Region</b>	1-377
<b>Specificity</b>	Recombinant fusion protein containing a sequence corresponding to amino acids 1-100 of human Alpha-Smooth Muscle Actin (ACTA2) (NP_001604.1).
<b>Immunogen Sequence</b>	MCEEEDSTALVCDNGSGLCK AGFAGDDAPRAVFPISIVGRP RHQGVMMVGMGQKDSYVGDEA QSKRGILTLYPIEHGIITN WDDMEKIWHHSFYNELRVAP EEHPTLLTEAPLNPKANREK MTQI



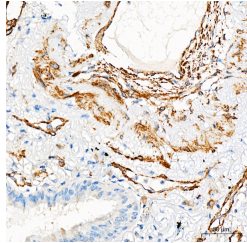
Immunofluorescence analysis of paraffin-embedded mouse colon using Alpha-Smooth Muscle Actin (ACTA2) Rabbit polyclonal antibody (STJ114915) at dilution of 1:100 (40x lens). Secondary antibody: Cy3 Goat Anti-Rabbit IgG (H+L) at 1:500 dilution. Blue: DAPI for nuclear staining.



Immunofluorescence analysis of paraffin-embedded human smooth muscle using Alpha-Smooth Muscle Actin (ACTA2) Rabbit polyclonal antibody (STJ114915) at dilution of 1:100 (40x lens). Secondary antibody: Cy3 Goat Anti-Rabbit IgG (H+L) at 1:500 dilution. Blue: DAPI for nuclear staining.



Immunofluorescence analysis of paraffin-embedded rat rectum using Alpha-Smooth Muscle Actin (ACTA2) Rabbit polyclonal antibody (STJ114915) at dilution of 1:100 (40x lens). Secondary antibody: Cy3 Goat Anti-Rabbit IgG (H+L) at 1:500 dilution. Blue: DAPI for nuclear staining.



Immunohistochemistry analysis of Alpha-Smooth Muscle Actin (ACTA2) in paraffin-embedded human lung tissue using Alpha-Smooth Muscle Actin (ACTA2) Rabbit polyclonal antibody (STJ114915) at a dilution of 1:1000 (40x lens). High pressure antigen retrieval was performed with 0.01 M Tris-EDTA buffer (pH 9.0) prior to immunohistochemistry staining.