

Anti-LEF1 antibody (20-132) (STJ114908)

STJ114908

GENERAL INFORMATION

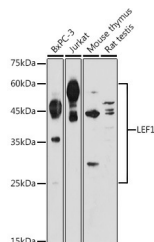
Product Type	Primary antibodies
Short Description	
Applications	WB/IF/ICC/IP/ELISA
Host/Source	Rabbit
Reactivity	Human/Mouse/Rat

PRODUCT PROPERTIES

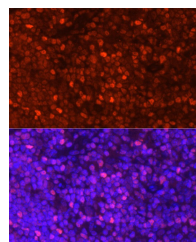
Clonality	Polyclonal
Clone ID	
Concentration	Lot specific
Conjugation	Unconjugated
Purification	Affinity purification
Dilution Range	WB:1:500-1:1000 IF/ICC:1:50-1:200 IP:0.5 Mu g-4 Mu g antibody for 200 Mu g-400 Mu g extracts of whole cells ELISA:Recommended starting concentration is 1 Mu g/mL. Please optimize the concentration based on your specific assay requirements
Formulation	PBS with 0.02% Sodium Azide, 50% Glycerol, pH 7.3.
Isotype	IgG
Storage	Store at -20°C for up to 1 year from the date of receipt, and avoid repeat freeze-thaw cycles.
Instruction	

TARGET INFORMATION

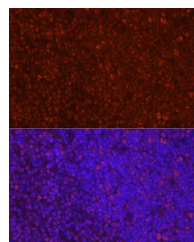
Gene ID	51176
Gene Symbol	LEF1
Uniprot ID	LEF1_HUMAN
Immunogen	
Immunogen Region	20-132
Specificity	Recombinant fusion protein containing a sequence corresponding to amino acids 20-132 of human LEF1 (NP_057353.1).
Immunogen Sequence	TDQMIPFKDEGDPQKEKIFA EISHPEEEGLADIKSSLVN ESEIIPASNGHEVARQAQTS QEPYHDKAREHPDDGKHPDG GLYNKGPSYSSSYGYIMMPN MNNDPYMSNGSL



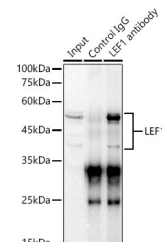
Western blot analysis of extracts of various cell lines, using LEF1 antibody (STJ114908) at 1:1000 dilution. Secondary antibody: HRP Goat Anti-rabbit IgG (H+L) (STJS000856) at 1:10000 dilution. Lysates/proteins: 25 Mu g per lane. Blocking buffer: 3% non-fat dry milk in TBST. Detection: ECL Basic Kit. Exposure time: 180s.



Immunofluorescence analysis of mouse thymus cells using LEF1 rabbit polyclonal antibody (STJ114908) at dilution of 1:20 (40x lens). Blue: DAPI for nuclear staining.



Immunofluorescence analysis of rat thymus cells using LEF1 rabbit polyclonal antibody (STJ114908) at dilution of 1:20 (40x lens). Blue: DAPI for nuclear staining.



Immunoprecipitation analysis of 300 Mu g extracts of Jurkat cells using 3 Mu g LEF1 antibody (STJ114908). Western blot was performed from the immunoprecipitate using LEF1 antibody (STJ114908) at a dilution of 1:1000.

This product is suitable for in-vitro studies under the RESEARCH USE ONLY [RUO] licence. This product must not be used as for diagnostic or other medical purposes.

St John's Laboratory Ltd, Knowledge Dock Business Centre, University Way, London, E16 2RD | Tel: 0208 223 3081