

Anti-BIRC2 antibody (331-618) (STJ114903)

STJ114903

GENERAL INFORMATION

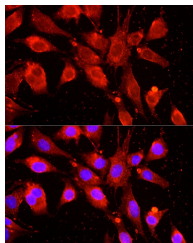
Product Type	Primary antibodies
Short Description	
Applications	WB/IHC-P/IF/ICC/ELISA
Host/Source	Rabbit
Reactivity	Human/Mouse/Rat

PRODUCT PROPERTIES

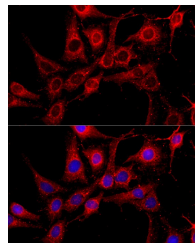
Clonality	Polyclonal
Clone ID	
Concentration	Lot specific
Conjugation	Unconjugated
Purification	Affinity purification
Dilution Range	WB:1:500-1:1000 IHC-P:1:50-1:200 IF/ICC:1:50-1:100 ELISA:Recommended starting concentration is 1 μ g/mL. Please optimize the concentration based on your specific assay requirements.
Formulation	PBS with 0.02% Sodium Azide, 50% Glycerol, pH 7.3.
Isotype	IgG
Storage Instruction	Store at -20°C for up to 1 year from the date of receipt, and avoid repeat freeze-thaw cycles.

TARGET INFORMATION

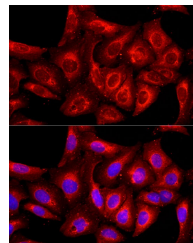
Gene ID	329
Gene Symbol	BIRC2
Uniprot ID	BIRC2_HUMAN
Immunogen	
Immunogen Region	331-618
Specificity	Recombinant fusion protein containing a sequence corresponding to amino acids 331-420 of human cIAP1 (NP_001157.1).
Immunogen Sequence	PRCEFLIRMKGQEFVDEIQG RYPHLLLEQLLSTSDTTGEEN ADPPIIHFGPGESSEDAMV MNTPVVKSALMGFNRLVK QTVQSKILTT



Immunofluorescence analysis of BALA-3T3 cells using cIAP1 rabbit polyclonal antibody (STJ114903) at dilution of 1:100 (40x lens). Blue: DAPI for nuclear staining.



Immunofluorescence analysis of C6 cells using cIAP1 rabbit polyclonal antibody (STJ114903) at dilution of 1:100 (40x lens). Blue: DAPI for nuclear staining.



Immunofluorescence analysis of U2OS cells using cIAP1 rabbit polyclonal antibody (STJ114903) at dilution of 1:100 (40x lens). Blue: DAPI for nuclear staining.

This product is suitable for in-vitro studies under the RESEARCH USE ONLY [RUO] licence. This product must not be used as for diagnostic or other medical purposes.
St John's Laboratory Ltd, Knowledge Dock Business Centre, University Way, London, E16 2RD | Tel: 0208 223 3081