

Anti-IRF3 antibody (310-410) (STJ114901)
STJ114901

GENERAL INFORMATION

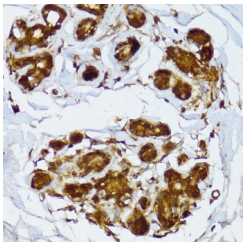
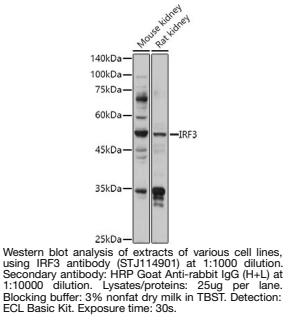
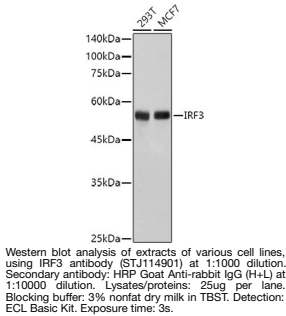
Product Type	Primary antibodies
Short Description	
Applications	IF/ICC/ELISA
Host/Source	Rabbit
Reactivity	Human/Mouse/Rat

PRODUCT PROPERTIES

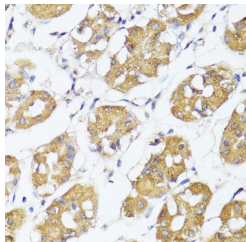
Clonality	Polyclonal
Clone ID	
Concentration	Lot specific
Conjugation	Unconjugated
Purification	Affinity purification
Dilution Range	IF/ICC:1:50-1:200 ELISA:Recommended starting concentration is 1 Mu g/mL. Please optimize the concentration based on your specific assay requirements.
Formulation	PBS with 0.02% Sodium Azide, 50% Glycerol, pH 7.3.
Isotype	IgG
Storage	Store at -20°C for up to 1 year from the date of receipt, and avoid repeat freeze-thaw cycles.
Instruction	

TARGET INFORMATION

Gene ID	3661
Gene Symbol	IRF3
Uniprot ID	IRF3_HUMAN
Immunogen	
Immunogen Region	310-410
Specificity	A synthetic peptide corresponding to a sequence within amino acids 310-410 of human IRF3 (NP_001562.1).
Immunogen Sequence	EVPKDKEGGVFDLGPFIIDL ITFTEGSGRSPRYALWFCVG ESWPQDQPWTKRLVMVKVVP TCLRALVEMARVGGASSLEN TVDLHISNSHPLSLTSDQYK A



Immunohistochemistry of paraffin-embedded human breast using IRF3 antibody (STJ114901) at dilution of 1:100 (40x lens). Perform microwave antigen retrieval with 10 mM PBS buffer pH 7. 2 before commencing with immunohistochemistry staining protocol.



Immunohistochemistry of paraffin-embedded human stomach using IRF3 antibody (STJ114901) at dilution of 1:100 (40x lens). Perform microwave antigen retrieval with 10 mM PBS buffer pH 7. 2 before commencing with immunohistochemistry staining protocol.

This product is suitable for in-vitro studies under the RESEARCH USE ONLY [RUO] licence. This product must not be used as for diagnostic or other medical purposes.
St John's Laboratory Ltd, Knowledge Dock Business Centre, University Way, London, E16 2RD | Tel: 0208 223 3081