

**Anti-NBN antibody (520-754) (STJ114898)**  
STJ114898

**GENERAL INFORMATION**

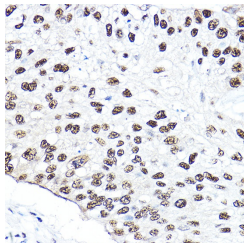
|                          |                    |
|--------------------------|--------------------|
| <b>Product Type</b>      | Primary antibodies |
| <b>Short Description</b> |                    |
| <b>Applications</b>      | WB/IHC-P/ELISA     |
| <b>Host/Source</b>       | Rabbit             |
| <b>Reactivity</b>        | Human/Mouse/Rat    |

**PRODUCT PROPERTIES**

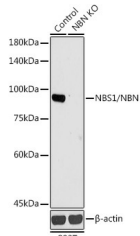
|                            |  |
|----------------------------|--|
| <b>Clonality</b>           | Polyclonal   |
| <b>Clone ID</b>            |  |
| <b>Concentration</b>       | Lot specific   |
| <b>Conjugation</b>         | Unconjugated   |
| <b>Purification</b>        | Affinity purification  |
| <b>Dilution</b>            | WB:1:500-1:1000  |
| <b>Range</b>               | IHC-P:1:50-1:200<br>ELISA:Recommended starting concentration is 1 $\mu$ g/mL. Please optimize the concentration based on your specific assay requirements. |
| <b>Formulation</b>         | PBS with 0.09% Sodium Azide, 50% Glycerol, pH 7.3.   |
| <b>Isotype</b>             | IgG  |
| <b>Storage Instruction</b> | Store at -20°C for up to 1 year from the date of receipt, and avoid repeat freeze-thaw cycles.   |

**TARGET INFORMATION**

|                           |   |
|---------------------------|---|
| <b>Gene ID</b>            | 4683  |
| <b>Gene Symbol</b>        | NBN   |
| <b>Uniprot ID</b>         | NBN_HUMAN   |
| <b>Immunogen</b>          |   |
| <b>Immunogen Region</b>   | 520-754   |
| <b>Specificity</b>        | Recombinant fusion protein containing a sequence corresponding to amino acids 520-754 of human NBS1/NBN (NP_002476.2).  |
| <b>Immunogen Sequence</b> | NNLFTDLDKSIKNSASKS HAAEKLRSNKKREMDDVAIE DEVLEQLFKDTKPELEIDVK VQKQEEDVNVKRPRMDIET<br>NDTFSDEAVPESSKISQENE IGKKRELKEDSLWSAKEISN NDKLQDDSEMLPKLLLLTEF RSLVIKNSTSRNPSGINDDY<br>GQLKNFKFKKVTYPGAGKL PHIIGGSDLIAHHARKNTEL EEWLRQEMEVQNHAKESL ADDLFRYPNPKRRR |



Immunohistochemistry analysis of paraffin-embedded human lung cancer using [KO Validated] NBS1/NBN Rabbit polyclonal antibody (STJ114898) at dilution of 1:50 (40x lens). Perform high pressure antigen retrieval with 10 mM citrate buffer, pH 6.0 before commencing with immunohistochemistry staining protocol.



Western blot analysis of extracts from normal (control) and NBS1/NBN knockout (KO) 293T cells, using NBS1/NBN antibody (STJ114898) at 1:1000 dilution. Secondary antibody: HRP Goat Anti-Rabbit IgG (H+L) (STJS000856) at 1:10000 dilution. Lysates/proteins: 25  $\mu$ g per lane. Blocking buffer: 3% nonfat dry milk in TBST. Detection: ECL Basic Kit. Exposure time: 90s.

This product is suitable for in-vitro studies under the RESEARCH USE ONLY [RUO] licence. This product must not be used as for diagnostic or other medical purposes.  
St John's Laboratory Ltd, Knowledge Dock Business Centre, University Way, London, E16 2RD | Tel: 0208 223 3081