

Anti-CDH2 antibody (807-906) (STJ114884)

STJ114884

GENERAL INFORMATION

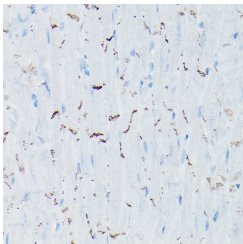
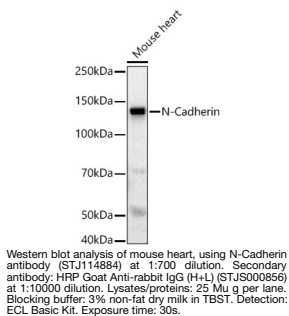
Product Type	Primary antibodies
Short Description	
Applications	WB/IHC-P/ELISA
Host/Source	Rabbit
Reactivity	Mouse/Rat

PRODUCT PROPERTIES

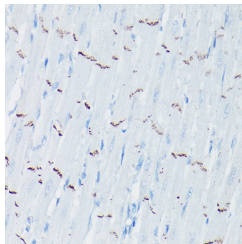
Clonality	Polyclonal
Clone ID	
Concentration	Lot specific
Conjugation	Unconjugated
Purification	Affinity purification
Dilution Range	WB:1:500-1:1000 IHC-P:1:50-1:200 ELISA:Recommended starting concentration is 1 Mu g/mL. Please optimize the concentration based on your specific assay requirements.
Formulation	PBS with 0.02% Sodium Azide, 50% Glycerol, pH 7.3.
Isotype	IgG
Storage	Store at -20°C for up to 1 year from the date of receipt, and avoid repeat freeze-thaw cycles.
Instruction	

TARGET INFORMATION

Gene ID	1000
Gene Symbol	CDH2
Uniprot ID	CADH2_HUMAN
Immunogen	
Immunogen Region	807-906
Specificity	A synthetic peptide corresponding to a sequence within amino acids 807-906 of human N-Cadherin (NP_001783.2). RRMDERPIHAEPQYPVRSAA PHPGDIGDFINEGLKAADND PTAPPYDSSLVFDYEGSGST AGSLSSLNSSSSGGGEQDYDY
Immunogen Sequence	LNDWGPFRFKLADMYGGGDD



Immunohistochemistry analysis of paraffin-embedded mouse heart using N-Cadherin rabbit polyclonal antibody (STJ114884) at dilution of 1:50 (40x lens). Perform high pressure antigen retrieval with 10 mM citrate buffer pH 6.0 before commencing with immunohistochemistry staining protocol.



Immunohistochemistry analysis of paraffin-embedded rat heart using N-Cadherin rabbit polyclonal antibody (STJ114884) at dilution of 1:50 (40x lens). Perform high pressure antigen retrieval with 10 mM citrate buffer pH 6.0 before commencing with immunohistochemistry staining protocol.

This product is suitable for in-vitro studies under the RESEARCH USE ONLY [RUO] licence. This product must not be used as for diagnostic or other medical purposes.
St John's Laboratory Ltd, Knowledge Dock Business Centre, University Way, London, E16 2RD | Tel: 0208 223 3081