

Anti-KAT2B antibody (1-86) (STJ114862)

STJ114862

GENERAL INFORMATION

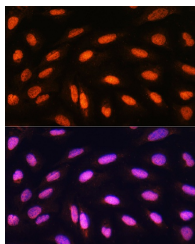
Product Type	Primary antibodies
Short Description	
Applications	WB/IF/ICC/ELISA
Host/Source	Rabbit
Reactivity	Human/Mouse/Rat

PRODUCT PROPERTIES

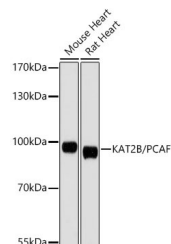
Clonality	Polyclonal
Clone ID	
Concentration	Lot specific
Conjugation	Unconjugated
Purification	Affinity purification
Dilution Range	WB:1:500-1:1000 IF/ICC:1:50-1:200 ELISA:Recommended starting concentration is 1 µg/mL. Please optimize the concentration based on your specific assay requirements.
Formulation	PBS with 0.02% Sodium Azide, 50% Glycerol, pH 7.3.
Isotype	IgG
Storage Instruction	Store at -20°C for up to 1 year from the date of receipt, and avoid repeat freeze-thaw cycles.

TARGET INFORMATION

Gene ID	8850
Gene Symbol	KAT2B
Uniprot ID	KAT2B_HUMAN
Immunogen	
Immunogen Region	1-86
Specificity	Recombinant fusion protein containing a sequence corresponding to amino acids 1-86 of human KAT2B/PCAF (NP_003875.3). MSEAGGAGPGGCGAGAGAGA GPGALPPQPAALPPAPPQGS PCAAAAGGSGACGPATAVAA AGTAEGPGGGGSARIIVKKA
Immunogen Sequence	QLRSAP



Immunofluorescence analysis of U2OS cells using KAT2B/PCAF Rabbit polyclonal antibody (STJ114862) at dilution of 1:100. Blue: DAPI for nuclear staining.



Western blot analysis of various lysates, using KAT2B/PCAF Rabbit polyclonal antibody (STJ114862) at 1:1000 dilution. Secondary antibody: HRP Goat Anti-Rabbit IgG (H+L) (STJ3000856) at 1:10000 dilution. Lysates/proteins: 25 µg per lane. Blocking buffer: 3% nonfat dry milk in TBST. Detection: ECL Basic Kit. Exposure time: 90s.

This product is suitable for in-vitro studies under the RESEARCH USE ONLY [RUO] licence. This product must not be used as for diagnostic or other medical purposes.
St John's Laboratory Ltd, Knowledge Dock Business Centre, University Way, London, E16 2RD | Tel: 0208 223 3081