

**Anti-Phospho-SMAD2/SMAD3-S423/425 antibody (STJ114840)**  
STJ114840

**GENERAL INFORMATION**

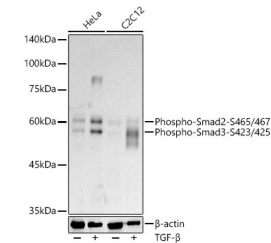
<b>Product Type</b>	Primary antibodies
<b>Short Description</b>	
<b>Applications</b>	WB/IHC-P/I/F/ICC/ELISA
<b>Host/Source</b>	Rabbit
<b>Reactivity</b>	Human/Mouse/Rat

**PRODUCT PROPERTIES**

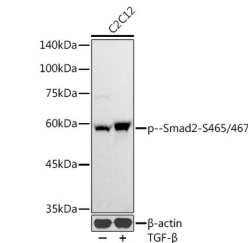
<b>Clonality</b>	Polyclonal
<b>Clone ID</b>	
<b>Concentration</b>	Lot specific
<b>Conjugation</b>	Unconjugated
<b>Purification</b>	Affinity purification
<b>Dilution Range</b>	WB:1:500-1:1000 IHC-P:1:50-1:200 IF/ICC:1:50-1:200 ELISA:Recommended starting concentration is 1 µg/mL. Please optimize the concentration based on your specific assay requirements.
<b>Formulation</b>	PBS with 0.09% Sodium Azide, 50% Glycerol, pH 7.3.
<b>Isotype</b>	IgG
<b>Storage Instruction</b>	Store at -20°C for up to 1 year from the date of receipt, and avoid repeat freeze-thaw cycles.

**TARGET INFORMATION**

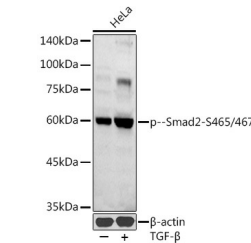
<b>Gene ID</b>	<a href="#">4088</a> <a href="#">4087</a>
<b>Gene Symbol</b>	<a href="#">SMAD3</a> <a href="#">SMAD2</a>
<b>Uniprot ID</b>	<a href="#">SMAD3_HUMAN</a> <a href="#">SMAD2_HUMAN</a>
<b>Immunogen</b>	RCSSMS
<b>Immunogen Region</b>	
<b>Specificity</b>	A synthetic phosphorylated peptide around S465 & S467 of human Phospho-Smad2-S465/467 + Smad3-S423/425SMAD2 (NP_005892.1).
<b>Immunogen Sequence</b>	RCSSMS



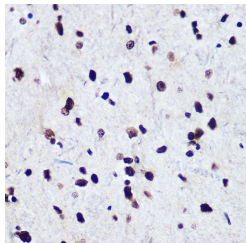
Western blot analysis of extracts of various cell lines, using Phospho-Smad2 (Ser465/467) + Smad3 (Ser423/425) antibody (STJ114840) at 1:1000 dilution. HeLa and C2C12 cells were treated by TGF-β (10 ng/ml) at 37 °C for 30 minutes after serum-starvation overnight. Secondary antibody: HRP Goat Anti-rabbit IgG (H+L) at 1:10000 dilution. Lysates/proteins: 25µg per lane. Blocking buffer: 3% nonfat dry milk in TBST. Detection: ECL Basic Kit. Exposure time: 90s.



Western blot analysis of extracts of C2C12 cells, using IL2 antibody (STJ230068) at 1:1000 dilution. C2C12 cells were treated by TGF-β (10 ng/ml) at 37 °C for 30 minutes after serum-starvation overnight. Secondary antibody: HRP Goat Anti-rabbit IgG (H+L) at 1:10000 dilution. Lysates/proteins: 25µg per lane. Blocking buffer: 3% nonfat dry milk in TBST. Detection: ECL Basic Kit. Exposure time: 30s.



Western blot analysis of extracts of HeLa cells, using IL2 antibody (STJ230068) at 1:1000 dilution. HeLa cells were treated by TGF-β (10 ng/ml) at 37 °C for 30 minutes after serum-starvation overnight. Secondary antibody: HRP Goat Anti-rabbit IgG (H+L) at 1:10000 dilution. Lysates/proteins: 25µg per lane. Blocking buffer: 3% nonfat dry milk in TBST. Detection: ECL Basic Kit. Exposure time: 180s.



Immunohistochemistry of paraffin-embedded Rat brain using Phospho-Smad2-S465/467 + Smad3-S423/425 antibody (STJ114840) at dilution of 1:100 (40x lens).

This product is suitable for in-vitro studies under the RESEARCH USE ONLY [RUO] licence. This product must not be used as for diagnostic or other medical purposes.  
St John's Laboratory Ltd, Knowledge Dock Business Centre, University Way, London, E16 2RD | Tel: 0208 223 3081