

Anti-SEMA3A antibody (300-400) (STJ114833)

STJ114833

GENERAL INFORMATION

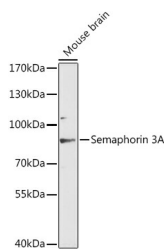
Product Type	Primary antibodies
Short Description	
Applications	WB/ELISA
Host/Source	Rabbit
Reactivity	Mouse/Rat

PRODUCT PROPERTIES

Clonality	Polyclonal
Clone ID	
Concentration	Lot specific
Conjugation	Unconjugated
Purification	Affinity purification
Dilution Range	WB:1:500-1:1000 ELISA:Recommended starting concentration is 1 Mu g/mL. Please optimize the concentration based on your specific assay requirements.
Formulation	PBS with 0.01% Thimerosal, 50% Glycerol, pH 7.3.
Isotype	IgG
Storage	Store at -20°C for up to 1 year from the date of receipt, and avoid repeat freeze-thaw cycles.
Instruction	

TARGET INFORMATION

Gene ID	10371
Gene Symbol	SEMA3A
Uniprot ID	SEM3A_HUMAN
Immunogen	
Immunogen Region	300-400
Specificity	A synthetic peptide corresponding to a sequence within amino acids 300-400 of human Semaphorin 3A (NP_006071.1).
Immunogen Sequence	GIDTHFDELQDVFLMNFKDP KNPVVYGVFTTSSNIFKGSA VCMYSMSDVRVFLGPYAGR DGPNYQWVPYQGRVPYPRPG TCPSKTFGGFDSTKDLPPDV I



Western blot analysis of lysates from mouse brain, using Semaphorin 3A Rabbit polyclonal antibody (STJ114833) at 1:3000 dilution. Secondary antibody: HRP Goat Anti-Rabbit IgG (H+L) (STJSD00856) at 1:10000 dilution. Lysates/proteins: 25 Mu g per lane. Blocking buffer: 3% nonfat dry milk in TBST. Detection: ECL Enhanced Kit. Exposure time: 90s.

This product is suitable for in-vitro studies under the RESEARCH USE ONLY [RUO] licence. This product must not be used as for diagnostic or other medical purposes.
St John's Laboratory Ltd, Knowledge Dock Business Centre, University Way, London, E16 2RD | Tel: 0208 223 3081