

Anti-HSPA1A antibody (500-600) (STJ114814)

STJ114814

GENERAL INFORMATION

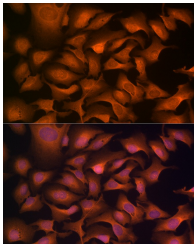
Product Type	Primary antibodies
Short Description	
Applications	WB/IHC-P/IF/ICC/ELISA
Host/Source	Rabbit
Reactivity	Human/Mouse/Rat

PRODUCT PROPERTIES

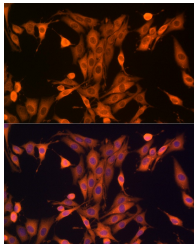
Clonality	Polyclonal
Clone ID	
Concentration	Lot specific
Conjugation	Unconjugated
Purification	Affinity purification
Dilution Range	WB:1:1000-1:3000 IHC-P:1:50-1:200 IF/ICC:1:50-1:200 ELISA:Recommended starting concentration is 1 µg/mL. Please optimize the concentration based on your specific assay requirements.
Formulation	PBS with 0.05% Proclin300, 50% Glycerol, pH 7.3.
Isotype	IgG
Storage Instruction	Store at -20°C for up to 1 year from the date of receipt, and avoid repeat freeze-thaw cycles.

TARGET INFORMATION

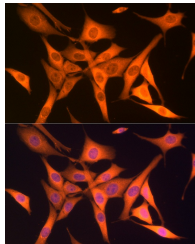
Gene ID	3303/3304
Gene Symbol	HSPA1A
Uniprot ID	HS71A_HUMAN
Immunogen	
Immunogen Region	500-600
Specificity	A synthetic peptide corresponding to a sequence within amino acids 500-600 of human HSP70/HSPA1 (NP_005336.3).
Immunogen Sequence	KITITNDKGRLSKEEIERMV QEAKEYKADEVQRERVSNAK NALESYAFNMKSAVEDEGLK GKISEADKKVLDKQCQEVIS WLDANTLAEKDEFEHKRKEL E



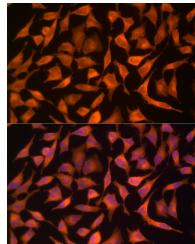
Immunofluorescence analysis of U2OS cells using HSP70 Rabbit polyclonal antibody (STJ114814) at dilution of 1:100 (40x lens). Secondary antibody: Cy3 Goat Anti-Rabbit IgG (H+L) at 1:500 dilution. Blue: DAPI for nuclear staining.



Immunofluorescence analysis of PC-12 cells using HSP70 Rabbit polyclonal antibody (STJ114814) at dilution of 1:100 (40x lens). Secondary antibody: Cy3 Goat Anti-Rabbit IgG (H+L) at 1:500 dilution. Blue: DAPI for nuclear staining.



Immunofluorescence analysis of NIH/3T3 cells using HSP70 Rabbit polyclonal antibody (STJ114814) at dilution of 1:100 (40x lens). Secondary antibody: Cy3 Goat Anti-Rabbit IgG (H+L) at 1:500 dilution. Blue: DAPI for nuclear staining.



Immunofluorescence analysis of HeLa cells using HSP70 Rabbit polyclonal antibody (STJ114814) at dilution of 1:100 (40x lens). Secondary antibody: Cy3 Goat Anti-Rabbit IgG (H+L) at 1:500 dilution. Blue: DAPI for nuclear staining.

This product is suitable for in-vitro studies under the RESEARCH USE ONLY [RUO] licence. This product must not be used as for diagnostic or other medical purposes.
St John's Laboratory Ltd, Knowledge Dock Business Centre, University Way, London, E16 2RD | Tel: 0208 223 3081