

Anti-YY1 antibody (80-160) (STJ114794)

STJ114794

GENERAL INFORMATION

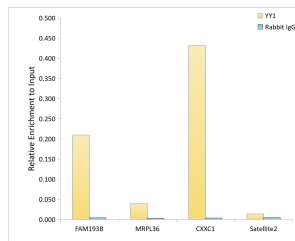
Product Type	Primary antibodies
Short Description	
Applications	WB/ELISA/ChIP
Host/Source	Rabbit
Reactivity	Human/Mouse/Rat

PRODUCT PROPERTIES

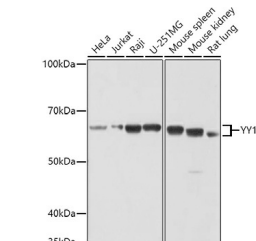
Clonality	Polyclonal
Clone ID	
Concentration	Lot specific
Conjugation	Unconjugated
Purification	Affinity purification
Dilution Range	WB:1:500-1:1000 ELISA:Recommended starting concentration is 1 Mu g/mL. Please optimize the concentration based on your specific assay requirements.
Formulation	ChIP:5 Mu g antibody for 10 Mu g-15 Mu g of Chromatin
Isotype	IgG
Storage Instruction	PBS with 0.01% Thimerosal, 50% Glycerol, pH 7.3. Store at -20°C for up to 1 year from the date of receipt, and avoid repeat freeze-thaw cycles.

TARGET INFORMATION

Gene ID	7528
Gene Symbol	YY1
Uniprot ID	TY11_HUMAN
Immunogen	
Immunogen Region	80-160
Specificity	Recombinant fusion protein containing a sequence corresponding to amino acids 80-160 of human YY1 (NP_003394.1).
Immunogen Sequence	HPPMIALQPLVTDDPTQVHH HQEVLVQTREEVVGDDSD GLRAEDGFEDQILIPVAPA GGDDDYIEQLTVVAAAGKS G



Chromatin immunoprecipitation analysis of extracts of 293T cells, using YY1 antibody (STJ114794) and rabbit IgG. The amount of immunoprecipitated DNA was checked by quantitative PCR. Histogram was constructed by the ratios of the immunoprecipitated DNA to the input.



Western blot analysis of various lysates using YY1 Rabbit polyclonal antibody (STJ114794) at 1:1000 dilution. Secondary antibody: HRP Goat Anti-Rabbit IgG (H+L) (STJS000856) at 1:10000 dilution. Lysates/proteins: 25 Mu g per lane. Blocking buffer: 3% nonfat dry milk in TBST. Detection: ECL Basic Kit. Exposure time: 180s.

This product is suitable for in-vitro studies under the RESEARCH USE ONLY [RUO] licence. This product must not be used as for diagnostic or other medical purposes.
St John's Laboratory Ltd, Knowledge Dock Business Centre, University Way, London, E16 2RD | Tel: 0208 223 3081