

Anti-SMC1B antibody (1012-1161) (STJ114771)

STJ114771

GENERAL INFORMATION

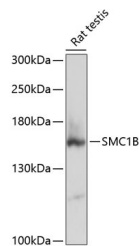
Product Type	Primary antibodies
Short Description	
Applications	WB/ELISA
Host/Source	Rabbit
Reactivity	Rat

PRODUCT PROPERTIES

Clonality	Polyclonal
Clone ID	
Concentration	Lot specific
Conjugation	Unconjugated
Purification	Affinity purification
Dilution	WB:1:500-1:1000
Range	ELISA:Recommended starting concentration is 1 µg/mL. Please optimize the concentration based on your specific assay requirements.
Formulation	PBS with 0.01% Thimerosal, 50% Glycerol, pH 7.3.
Isotype	IgG
Storage	Store at -20°C for up to 1 year from the date of receipt, and avoid repeat freeze-thaw cycles.
Instruction	

TARGET INFORMATION

Gene ID	27127
Gene Symbol	SMC1B
Uniprot ID	SMC1B_HUMAN
Immunogen	
Immunogen Region	1012-1161
Specificity	Recombinant fusion protein containing a sequence corresponding to amino acids 1012-1161 of human SMC1B (NP_001278430.1).
Immunogen Sequence	ILLKTAAPNLRALLENLKTVR DKFQESTDAFEASRKEARLC RQEFQVKKRRYDLFTQCFE HVSISIDQIYKKLCRNNSAQ VSSYIKEQTQDQFMIVISL KEFYSRADALIGIPEYDD CMFSRVLTLDLSQYPDTEGQ ESSKRHGESR



Western blot analysis of extracts of rat testis, using SMC1B antibody (STJ114771) at 1:3000 dilution. Secondary antibody: HRP Goat Anti-rabbit IgG (H+L) at 1:10000 dilution. Lysates/proteins: 25µg per lane. Blocking buffer: 3% nonfat dry milk in TBST. Detection: ECL Basic Kit. Exposure time: 30s.

This product is suitable for in-vitro studies under the RESEARCH USE ONLY [RUO] licence. This product must not be used as for diagnostic or other medical purposes.
St John's Laboratory Ltd, Knowledge Dock Business Centre, University Way, London, E16 2RD | Tel: 0208 223 3081