

Anti-ZBTB33 antibody (523-672) (STJ114766)

STJ114766

GENERAL INFORMATION

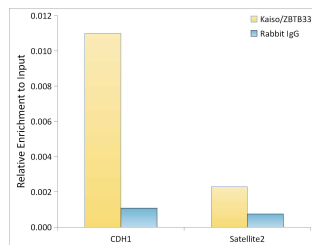
Product Type	Primary antibodies
Short Description	
Applications	WB/ELISA/ChIP
Host/Source	Rabbit
Reactivity	Human/Mouse/Rat

PRODUCT PROPERTIES

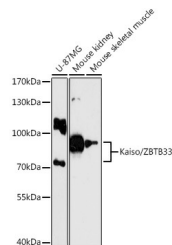
Clonality	Polyclonal
Clone ID	
Concentration	Lot specific
Conjugation	Unconjugated
Purification	Affinity purification
Dilution	WB:1:1000-1:2000
Range	ELISA:Recommended starting concentration is 1 Mu g/mL. Please optimize the concentration based on your specific assay requirements. ChIP:5 Mu g antibody for 10 Mu g-15 Mu g of Chromatin
Formulation	PBS with 0.01% Thimerosal, 50% Glycerol, pH 7.3.
Isotype	IgG
Storage Instruction	Store at -20°C for up to 1 year from the date of receipt, and avoid repeat freeze-thaw cycles.

TARGET INFORMATION

Gene ID	10009
Gene Symbol	ZBTB33
Uniprot ID	KAISO_HUMAN
Immunogen	
Immunogen Region	523-672
Specificity	Recombinant fusion protein containing a sequence corresponding to amino acids 523-672 of human Kaiso/Kaiso/ZBTB33 (NP_006768.1).
Immunogen Sequence	PCRYCEKVFPLAEYRTKHEI HHTGERRYQCLACGKSFINY QFMSSHIKSVHSQDPSGDSK LYRLHPCRSLLQIRQYAYLSD RSSTIPAMKDDGIGYKVDTG KEPPVGTSTTQNKPMTWED IFIQQENDSIFKQNVTDGST EFEFIIPESY



Chromatin immunoprecipitation analysis of extracts of HeLa cells, using Kaiso/ZBTB33 antibody (STJ114766) and rabbit IgG. The amount of immunoprecipitated DNA was checked by quantitative PCR. Histogram was constructed by the ratios of the immunoprecipitated DNA to the input.



Western blot analysis of various lysates using Kaiso/ZBTB33 Rabbit polyclonal antibody (STJ114766) at 1:3000 dilution. Secondary antibody: HRP Goat Anti-Rabbit IgG (H+L) (STJ5000856) at 1:10000 dilution. Lysates/proteins: 25 Mu g per lane. Blocking buffer: 3% nonfat dry milk in TBST. Detection: ECL Enhanced Kit. Exposure time: 90s.

This product is suitable for in-vitro studies under the RESEARCH USE ONLY [RUO] licence. This product must not be used as for diagnostic or other medical purposes.
St John's Laboratory Ltd, Knowledge Dock Business Centre, University Way, London, E16 2RD | Tel: 0208 223 3081