

**Anti-RCOR1 antibody (256-485) (STJ114711)**  
STJ114711

**GENERAL INFORMATION**

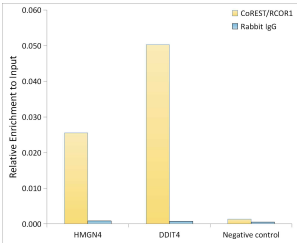
<b>Product Type</b>	Primary antibodies
<b>Short Description</b>	
<b>Applications</b>	WB/IF/ICC/IP/ELISA/ChIP
<b>Host/Source</b>	Rabbit
<b>Reactivity</b>	Human/Mouse

**PRODUCT PROPERTIES**

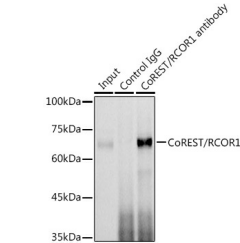
<b>Clonality</b>	Polyclonal
<b>Clone ID</b>	
<b>Concentration</b>	Lot specific
<b>Conjugation</b>	Unconjugated
<b>Purification</b>	Affinity purification
<b>Dilution Range</b>	WB:1:500-1:2000 IF/CC:1:50-1:200 IP:0.5 Mu g-4 Mu g antibody for 200 Mu g-400 Mu g extracts of whole cells ELISA:Recommended starting concentration is 1 Mu g/mL. Please optimize the concentration based on your specific assay requirements
<b>Formulation</b>	PBS with 0.01% Thimerosal, 50% Glycerol, pH 7.3.
<b>Isotype</b>	IgG
<b>Storage Instruction</b>	Store at-20°C for up to 1 year from the date of receipt, and avoid repeat freeze-thaw cycles.

**TARGET INFORMATION**

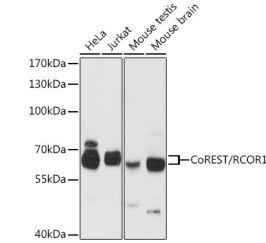
<b>Gene ID</b>	23186
<b>Gene Symbol</b>	RCOR1
<b>Uniprot ID</b>	RCOR1_HUMAN
<b>Immunogen</b>	
<b>Immunogen Region</b>	256-485
<b>Specificity</b>	Recombinant fusion protein containing a sequence corresponding to amino acids 256-485 of human CoREST/CoREST/RCOR1 (NP_055971.2).
<b>Immunogen Sequence</b>	ERESEDELEEANGNNPIDI EVDQNKESKKEVPPTETVPQ VKKEKHSTQAKNRAKRKPPK GMFLSQEDVEAVSANATAAT TVLRQLDMELYSVKRQIQNI KQTNSALKEKLDGGIEPYRL PEVIQKCNARWTTTEEQLLAV QAIRKYGRDFQAISDVIGNK SVVQVKNFVNYRRRFNIDE VLQEWAEHGKEETNGPSNQ KPVKSPDNSIKMPEEEDEAP VLDVRYASAS



Chromatin immunoprecipitation analysis of extracts of HepG2 cells, using CoREST/RCOR1 antibody (STJ114711) and rabbit IgG. The amount of immunoprecipitated DNA was checked by quantitative PCR. Histogram was constructed by the ratios of the immunoprecipitated DNA to the input.



Immunoprecipitation analysis of 300 Mu g extracts of Jurkat cells using 3 Mu g CoREST/RCOR1 antibody (STJ114711). Western blot was performed from the immunoprecipitate using CoREST/RCOR1 antibody (STJ114711) at a dilution of 1:1000.



Western blot analysis of various lysates using CoREST/RCOR1 Rabbit polyclonal antibody (STJ114711) at 1:3000 dilution. Secondary antibody: HRP Goat Anti-Rabbit IgG (H+L) (STJ5000695) at 1:10000 dilution. Lysates/proteins: 25 Mu g per lane. Blocking buffer: 3% nonfat dry milk in TBST. Detection: ECL Basic Kit. Exposure time: 30s.

This product is suitable for in-vitro studies under the RESEARCH USE ONLY [RUO] licence. This product must not be used as for diagnostic or other medical purposes.  
St John's Laboratory Ltd, Knowledge Dock Business Centre, University Way, London, E16 2RD | Tel: 0208 223 3081