

Anti-PPM1J antibody (130-260) (STJ114710)

STJ114710

GENERAL INFORMATION

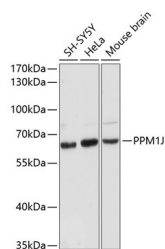
Product Type	Primary antibodies
Short Description	
Applications	WB/ELISA
Host/Source	Rabbit
Reactivity	Human/Mouse

PRODUCT PROPERTIES

Clonality	Polyclonal
Clone ID	
Concentration	Lot specific
Conjugation	Unconjugated
Purification	Affinity purification
Dilution	WB: 1:500-1:2000
Range	ELISA: Recommended starting concentration is 1 µg/mL. Please optimize the concentration based on your specific assay requirements.
Formulation	PBS with 0.01% Thimerosal, 50% Glycerol, pH 7.3.
Isotype	IgG
Storage	Store at -20°C for up to 1 year from the date of receipt, and avoid repeat freeze-thaw cycles.
Instruction	

TARGET INFORMATION

Gene ID	333926
Gene Symbol	PPM1J
Uniprot ID	PPM1J_HUMAN
Immunogen	
Immunogen Region	130-260
Specificity	Recombinant fusion protein containing a sequence corresponding to amino acids 130-260 of human PPM1J (NP_005158.5). VEGRRSVTGVPREPSRGQGL CFYYWGLFDGHAGGGAEMA SLLHHRHIREQLKDLVEILQ DPSPPPLCLPTTPGTPDSSD
Immunogen Sequence	PSHLLGPQSCWSSQKEVSHE SLWGAVENAFQLMDEQMAR ERRGHQVEGGC



Western blot analysis of various lysates using PPM1J Rabbit polyclonal antibody (STJ114710) at 1:3000 dilution. Secondary antibody: HRP Goat Anti-Rabbit IgG (H+L) (STJS000856) at 1:10000 dilution. Lysates/proteins: 25 µg per lane. Blocking buffer: 3% nonfat dry milk in TBST. Detection: ECL Basic Kit. Exposure time: 90s.

This product is suitable for in-vitro studies under the RESEARCH USE ONLY [RUO] licence. This product must not be used as for diagnostic or other medical purposes.
St John's Laboratory Ltd, Knowledge Dock Business Centre, University Way, London, E16 2RD | Tel: 0208 223 3081