

## Anti-MFN2 antibody (70-260) (STJ114644)

STJ114644

### GENERAL INFORMATION

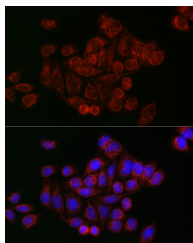
|                          |                    |
|--------------------------|--------------------|
| <b>Product Type</b>      | Primary antibodies |
| <b>Short Description</b> |                    |
| <b>Applications</b>      | WB/IF/ICC/ELISA    |
| <b>Host/Source</b>       | Rabbit             |
| <b>Reactivity</b>        | Human/Mouse/Rat    |

### PRODUCT PROPERTIES

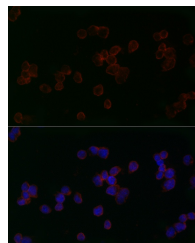
|                            |   |
|----------------------------|---|
| <b>Clonality</b>           | Polyclonal  |
| <b>Clone ID</b>            |   |
| <b>Concentration</b>       | Lot specific  |
| <b>Conjugation</b>         | Unconjugated  |
| <b>Purification</b>        | Affinity purification   |
| <b>Dilution</b>            | WB:1:500-1:1000   |
| <b>Range</b>               | IF/CC:1:50-1:200  |
|                            | ELISA:Recommended starting concentration is 1 µg/mL. Please optimize the concentration based on your specific assay requirements. |
| <b>Formulation</b>         | PBS with 0.02% Sodium Azide, 50% Glycerol, pH 7.3.  |
| <b>Isotype</b>             | IgG   |
| <b>Storage Instruction</b> | Store at -20°C for up to 1 year from the date of receipt, and avoid repeat freeze-thaw cycles.                                    |

### TARGET INFORMATION

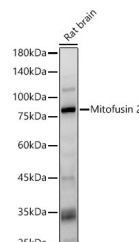
|                           |  |
|---------------------------|--|
| <b>Gene ID</b>            | 9927   |
| <b>Gene Symbol</b>        | MFN2   |
| <b>Uniprot ID</b>         | MFN2_HUMAN   |
| <b>Immunogen</b>          |  |
| <b>Immunogen Region</b>   | 70-260   |
| <b>Specificity</b>        | A synthetic peptide corresponding to a sequence within amino acids 70-260 of human Mitofusin 2 (NP_055689.1).  |
| <b>Immunogen Sequence</b> | TTEEQVLGVKGYLSKVRGIS EVLARRHMKVAFFGRTSNGK STVINAMLWDKVLPSGIGHT TNCFLRVEGTDGHEAFLLTE<br>GSEEKRSKTVNQLAHLHQ DKQLHAGSLVSMWPNSKCP LLKDDLVLMDSPGIDVTTEL DSWIDKFCLDADVFVLVANS<br>ESTLMQTEKHFFHKVSRERLS RPNIFILNNRW |



Immunofluorescence analysis of HeLa cells using Mitofusin 2 Rabbit polyclonal antibody (STJ114644) at dilution of 1:50 (40x lens). Blue: DAPI for nuclear staining.



Immunofluorescence analysis of 293T cells using Mitofusin 2 Rabbit polyclonal antibody (STJ114644) at dilution of 1:50 (40x lens). Blue: DAPI for nuclear staining.



Western blot analysis of Rat brain, using Mitofusin 2 antibody (STJ114644) at 1:400 dilution. Secondary antibody: HRP-Goat Anti-Rabbit IgG (H+L) (STJS000856) at 1:10000 dilution. Lysates/proteins: 25 µg per lane. Blocking buffer: 3% nonfat dry milk in TBST. Detection: ECL Basic Kit. Exposure time: 30s.

This product is suitable for in-vitro studies under the RESEARCH USE ONLY [RUO] licence. This product must not be used as for diagnostic or other medical purposes.  
St John's Laboratory Ltd, Knowledge Dock Business Centre, University Way, London, E16 2RD | Tel: 0208 223 3081