

## Anti-Kdm6b antibody (90-190) (STJ114640)

STJ114640

### GENERAL INFORMATION

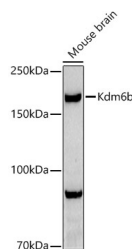
|                          |                    |
|--------------------------|--------------------|
| <b>Product Type</b>      | Primary antibodies |
| <b>Short Description</b> |                    |
| <b>Applications</b>      | WB/ELISA           |
| <b>Host/Source</b>       | Rabbit             |
| <b>Reactivity</b>        | Human/Mouse        |

### PRODUCT PROPERTIES

|                       |   |
|-----------------------|---|
| <b>Clonality</b>      | Polyclonal  |
| <b>Clone ID</b>       |   |
| <b>Concentration</b>  | Lot specific  |
| <b>Conjugation</b>    | Unconjugated  |
| <b>Purification</b>   | Affinity purification   |
| <b>Dilution Range</b> | WB:1:100-1:500<br>ELISA:Recommended starting concentration is 1 Mu g/mL. Please optimize the concentration based on your specific assay requirements. |
| <b>Formulation</b>    | PBS with 0.05% Proclin300, 50% Glycerol, pH 7.3.  |
| <b>Isotype</b>        | IgG   |
| <b>Storage</b>        | Store at -20°C for up to 1 year from the date of receipt, and avoid repeat freeze-thaw cycles.  |
| <b>Instruction</b>    |   |

### TARGET INFORMATION

|                           |   |
|---------------------------|---|
| <b>Gene ID</b>            | <a href="#">216850</a>  |
| <b>Gene Symbol</b>        | <a href="#">Kdm6b</a>   |
| <b>Uniprot ID</b>         | <a href="#">KDM6B_MOUSE</a>   |
| <b>Immunogen</b>          |   |
| <b>Immunogen Region</b>   | 90-190  |
| <b>Specificity</b>        | Recombinant fusion protein containing a sequence corresponding to amino acids 90-190 of mouse Kdm6b (NP_001017426.1). |
| <b>Immunogen Sequence</b> | LESLHGCVCVQALLREPAQPGL WEQLGQLYESEHDSEEA VCC YHRALRYGGSFAELGPRIGR LQQAQLWNFHAGSCQHRAKV LPPLQVWNLLHLEHKRNYG A          |



Western blot analysis of extracts of Mouse brain, using Kdm6b Rabbit polyclonal antibody (STJ114640) at 1:500 dilution. Secondary antibody: HRP Goat Anti-Rabbit IgG (H+L) (STJ5000856) at 1:10000 dilution. Lysates/proteins: 25 Mu g per lane. Blocking buffer: 3% nonfat dry milk in TBST. Detection: ECL Basic Kit. Exposure time: 90s.

This product is suitable for in-vitro studies under the RESEARCH USE ONLY [RUO] licence. This product must not be used as for diagnostic or other medical purposes.  
St John's Laboratory Ltd, Knowledge Dock Business Centre, University Way, London, E16 2RD | Tel: 0208 223 3081