

Anti-RAB14 antibody (39-140) (STJ114625)
STJ114625

GENERAL INFORMATION

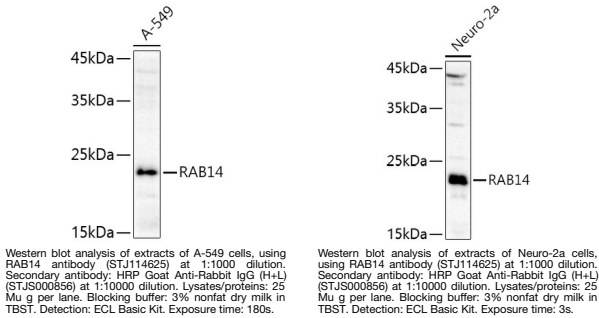
Product Type	Primary antibodies
Short Description	
Applications	WB/ELISA
Host/Source	Rabbit
Reactivity	Human/Mouse

PRODUCT PROPERTIES

Clonality	Polyclonal
Clone ID	
Concentration	Lot specific
Conjugation	Unconjugated
Purification	Affinity purification
Dilution Range	WB:1:500-1:1000 ELISA:Recommended starting concentration is 1 Mu g/mL. Please optimize the concentration based on your specific assay requirements.
Formulation	PBS with 0.05% Proclin300, 50% Glycerol, pH 7.3.
Isotype	IgG
Storage Instruction	Store at -20°C for up to 1 year from the date of receipt, and avoid repeat freeze-thaw cycles.

TARGET INFORMATION

Gene ID	51552
Gene Symbol	RAB14
Uniprot ID	RAB14_HUMAN
Immunogen	
Immunogen Region	39-140
Specificity	A synthetic peptide corresponding to a sequence within amino acids 39-140 of human RAB14 (NP_057406.2).
Immunogen Sequence	DCPHTIGVEFGTRIIEVSGQ KIKLQIWDTAGQERFRAVTR SYYRGAAGALMVYDITRRST YNHLSSWLTDARNLTNPNTV IILIGNKADLEAQRDVTYEE AK



This product is suitable for in-vitro studies under the RESEARCH USE ONLY [RUO] licence. This product must not be used as for diagnostic or other medical purposes.
St John's Laboratory Ltd, Knowledge Dock Business Centre, University Way, London, E16 2RD | Tel: 0208 223 3081