

**Anti-COPS8 antibody (1-209) (STJ114618)**  
STJ114618

**GENERAL INFORMATION**

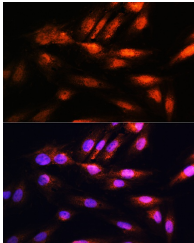
|                          |                    |
|--------------------------|--------------------|
| <b>Product Type</b>      | Primary antibodies |
| <b>Short Description</b> |                    |
| <b>Applications</b>      | WB/IF/ICC/ELISA    |
| <b>Host/Source</b>       | Rabbit             |
| <b>Reactivity</b>        | Human/Mouse/Rat    |

**PRODUCT PROPERTIES**

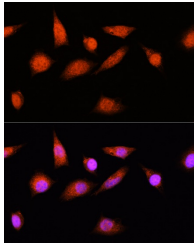
|                            |   |
|----------------------------|---|
| <b>Clonality</b>           | Polyclonal  |
| <b>Clone ID</b>            |   |
| <b>Concentration</b>       | Lot specific  |
| <b>Conjugation</b>         | Unconjugated  |
| <b>Purification</b>        | Affinity purification   |
| <b>Dilution Range</b>      | WB: 1:500-1:2000<br>IF/CC: 1:50-1:200<br>ELISA: Recommended starting concentration is 1 µg/mL. Please optimize the concentration based on your specific assay requirements. |
| <b>Formulation</b>         | PBS with 0.01% Thimerosal, 50% Glycerol, pH 7.3.  |
| <b>Isotype</b>             | IgG   |
| <b>Storage Instruction</b> | Store at -20°C for up to 1 year from the date of receipt, and avoid repeat freeze-thaw cycles.  |

**TARGET INFORMATION**

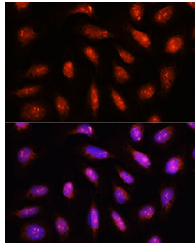
|                           |  |
|---------------------------|--|
| <b>Gene ID</b>            | 10920  |
| <b>Gene Symbol</b>        | COPS8  |
| <b>Uniprot ID</b>         | CSN8_HUMAN   |
| <b>Immunogen Region</b>   | 1-209  |
| <b>Specificity</b>        | Recombinant fusion protein containing a sequence corresponding to amino acids 1-209 of human COPS8 (NP_006701.1).  |
| <b>Immunogen Sequence</b> | MPVAVMAESAFSFKLLDQC ENQLEAPGGIATPPVYGQL LALYLLHNDMNNARYLWKRI PPAIKSANSELGGIWSVGQR<br>IWQRDFPGIYTTINAHQWSE TVQPIMEALRDATRRRAFAL VSQAYTSIIADDFAAFGVLP VEEAVKGILEQGWQADSTTR<br>MVLPRKPVAGALDVSFNKFI PLSEPAPVPPINEQQLARL TDYVAFLEN |



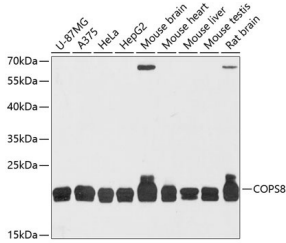
Immunofluorescence analysis of H9C2 cells using COPS8 Rabbit polyclonal antibody (STJ114618) at dilution of 1:100. Secondary antibody: Cy3 Goat Anti-Rabbit IgG (H+L) at 1:500 dilution. Blue: DAPI for nuclear staining.



Immunofluorescence analysis of L929 cells using COPS8 Rabbit polyclonal antibody (STJ114618) at dilution of 1:100. Secondary antibody: Cy3 Goat Anti-Rabbit IgG (H+L) at 1:500 dilution. Blue: DAPI for nuclear staining.



Immunofluorescence analysis of U2OS cells using COPS8 Rabbit polyclonal antibody (STJ114618) at dilution of 1:100. Secondary antibody: Cy3 Goat Anti-Rabbit IgG (H+L) at 1:500 dilution. Blue: DAPI for nuclear staining.



Western blot analysis of various lysates using COPS8 Rabbit polyclonal antibody (STJ114618) at 1:3000 dilution. Secondary antibody: HRP Goat Anti-Rabbit IgG (H+L) (STJ5000856) at 1:10000 dilution. Lysates/proteins: 25 µg per lane. Blocking buffer: 3% nonfat dry milk in TBST. Detection: ECL Basic Kit. Exposure time: 60s.

This product is suitable for in-vitro studies under the RESEARCH USE ONLY [RUO] licence. This product must not be used as for diagnostic or other medical purposes.  
St John's Laboratory Ltd, Knowledge Dock Business Centre, University Way, London, E16 2RD | Tel: 0208 223 3081