

Anti-JAG1 antibody (34-180) (STJ114606)

STJ114606

GENERAL INFORMATION

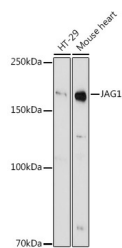
Product Type	Primary antibodies
Short Description	
Applications	WB/IF/ICC/ELISA
Host/Source	Rabbit
Reactivity	Human/Mouse

PRODUCT PROPERTIES

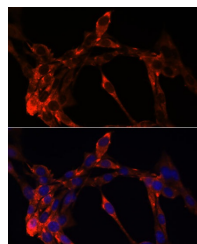
Clonality	Polyclonal
Clone ID	
Concentration	Lot specific
Conjugation	Unconjugated
Purification	Affinity purification
Dilution	WB:1:500-1:1000
Range	IF/CC:1:50-1:200
	ELISA:Recommended starting concentration is 1 µg/mL. Please optimize the concentration based on your specific assay requirements.
Formulation	PBS with 0.05% Proclin300, 50% Glycerol, pH 7.3.
Isotype	IgG
Storage	Store at -20°C for up to 1 year from the date of receipt, and avoid repeat freeze-thaw cycles.
Instruction	

TARGET INFORMATION

Gene ID	182
Gene Symbol	JAG1
Uniprot ID	JAG1_HUMAN
Immunogen	
Immunogen Region	34-180
Specificity	Recombinant fusion protein containing a sequence corresponding to amino acids 34-180 of human JAG1 (NP_000205.1).
Immunogen Sequence	QFELEILSMQNVNGLQNGN CCGGARNPGDRKCTRDECDT YFKVCLKEYQSRVTAGGPCS FGSGSTPVI GGNTFNLKASR GNDNRNIVLPFSFAWPRSYT LLVEAWDSSNDTVQPDSEI KASHSGMINPSRQWQTLKQN TGVAHFE



Western blot analysis of extracts of various cell lines, using JAG1 antibody (STJ114606) at 1:1000 dilution. Secondary antibody: HRP Goat Anti-rabbit IgG (H+L) at 1:10000 dilution. Lysates/proteins: 25µg per lane. Blocking buffer: 3% nonfat dry milk in TBST. Detection: ECL Basic Kit. Exposure time: 90s.



Immunofluorescence analysis of NIH/3T3 cells using JAG1 antibody (STJ114606) at dilution of 1:100. Blue: DAPI for nuclear staining.