

## Anti-MDC1 antibody (1-100) (STJ114587)

STJ114587

### GENERAL INFORMATION

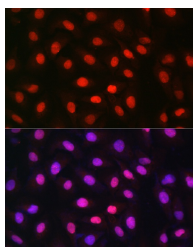
<b>Product Type</b>	Primary antibodies
<b>Short Description</b>	
<b>Applications</b>	WB/IHC-P/IF/ICC/ELISA
<b>Host/Source</b>	Rabbit
<b>Reactivity</b>	Human/Mouse

### PRODUCT PROPERTIES

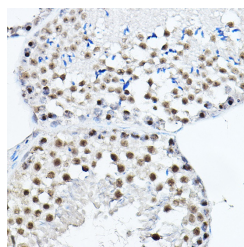
<b>Clonality</b>	Polyclonal
<b>Clone ID</b>	
<b>Concentration</b>	Lot specific
<b>Conjugation</b>	Unconjugated
<b>Purification</b>	Affinity purification
<b>Dilution Range</b>	WB:1:500-1:2000 IHC-P:1:50-1:200 IF/ICC:1:50-1:200 ELISA:Recommended starting concentration is 1 µg/mL. Please optimize the concentration based on your specific assay requirements.
<b>Formulation</b>	PBS with 0.09% Sodium Azide, 50% Glycerol, pH 7.3.
<b>Isotype</b>	IgG
<b>Storage Instruction</b>	Store at -20°C for up to 1 year from the date of receipt, and avoid repeat freeze-thaw cycles.

### TARGET INFORMATION

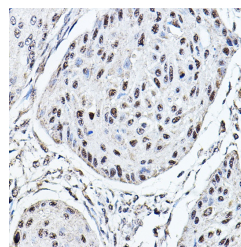
<b>Gene ID</b>	9656
<b>Gene Symbol</b>	MDC1
<b>Uniprot ID</b>	MDC1_HUMAN
<b>Immunogen</b>	
<b>Immunogen Region</b>	1-100
<b>Specificity</b>	A synthetic peptide corresponding to a sequence within amino acids 1-100 of human MDC1 (NP_055456.2).
<b>Immunogen Sequence</b>	MEDTQAIDWDVEEEEETEQS SESLRCNVEPVGRLHIFSGA HGPEKDFPLHLGKNVGRMP DCSVALFPFSISKQHAIEI LAWDKAPILRDCGSLNGTQI



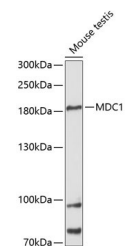
Immunofluorescence analysis of U-2 OS cells using MDC1 Rabbit polyclonal antibody (STJ114587) at dilution of 1:100 (40x lens). Secondary antibody: Cy3 Goat Anti-Rabbit IgG (H+L) at 1:500 dilution. Blue: DAPI for nuclear staining.



Immunohistochemistry analysis of MDC1 in paraffin-embedded mouse testis using MDC1 Rabbit polyclonal antibody (STJ114587) at dilution of 1:100 (40x lens). Perform high pressure antigen retrieval with 10 mM citrate buffer pH 6.0 before commencing with immunohistochemistry staining protocol.



Immunohistochemistry analysis of MDC1 in paraffin-embedded human esophageal cancer using MDC1 Rabbit polyclonal antibody (STJ114587) at dilution of 1:100 (40x lens). Perform high pressure antigen retrieval with 10 mM citrate buffer pH 6.0 before commencing with immunohistochemistry staining protocol.



Western blot analysis of lysates from mouse testis, using MDC1 Rabbit polyclonal antibody (STJ114587) at 1:3000 dilution. Secondary antibody: HRP Goat Anti-Rabbit IgG (H+L) (STJS000856) at 1:10000 dilution. Lysates/proteins: 25 µg per lane. Blocking buffer: 3% nonfat dry milk in TBST. Detection: ECL Basic Kit. Exposure time: 90s.

This product is suitable for in-vitro studies under the RESEARCH USE ONLY [RUO] licence. This product must not be used as for diagnostic or other medical purposes.  
St John's Laboratory Ltd, Knowledge Dock Business Centre, University Way, London, E16 2RD | Tel: 0208 223 3081