

## Anti-GUCY1A3 antibody (1-120) (STJ114583)

STJ114583

### GENERAL INFORMATION

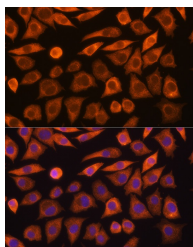
<b>Product Type</b>	Primary antibodies
<b>Short Description</b>	
<b>Applications</b>	WB/IF/ICC/ELISA
<b>Host/Source</b>	Rabbit
<b>Reactivity</b>	Human/Mouse/Rat

### PRODUCT PROPERTIES

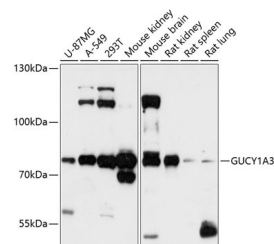
<b>Clonality</b>	Polyclonal
<b>Clone ID</b>	
<b>Concentration</b>	Lot specific
<b>Conjugation</b>	Unconjugated
<b>Purification</b>	Affinity purification
<b>Dilution Range</b>	WB:1:1000-1:3000 IF/ICC:1:50-1:200 ELISA:Recommended starting concentration is 1 µg/mL. Please optimize the concentration based on your specific assay requirements.
<b>Formulation</b>	PBS with 0.01% Thimerosal, 50% Glycerol, pH 7.3.
<b>Isotype</b>	IgG
<b>Storage Instruction</b>	Store at -20°C for up to 1 year from the date of receipt, and avoid repeat freeze-thaw cycles.

### TARGET INFORMATION

<b>Gene ID</b>	2982
<b>Gene Symbol</b>	GUCY1A1
<b>Uniprot ID</b>	GCYA1_HUMAN
<b>Immunogen</b>	
<b>Immunogen Region</b>	1-120
<b>Specificity</b>	Recombinant fusion protein containing a sequence corresponding to amino acids 1-120 of human GUCY1A3 (NP_000847.2).
<b>Immunogen Sequence</b>	MFCTKLKDLKITGECPFSL APGQVPNESSEEAAGSSSEC KATVPICQDIPEKNIQESLP QRKTSRSRVYLHTLAESICK LIFPEFERLNVALQRTLAKH KIKESRKSRLERDFEKTIAE



Immunofluorescence analysis of L929 cells using GUCY1A3 Rabbit polyclonal antibody (STJ114583) at dilution of 1:100 (40x lens). Secondary antibody: Cy3 Goat Anti-Rabbit IgG (H+L) at 1:500 dilution. Blue: DAPI for nuclear staining.



Western blot analysis of various lysates using GUCY1A3 Rabbit polyclonal antibody (STJ114583) at 1:3000 dilution. Secondary antibody: HRP Goat Anti-Rabbit IgG (H+L) (STJS000856) at 1:10000 dilution. Lysates/proteins: 25 µg per lane. Blocking buffer: 3% nonfat dry milk in TBST. Detection: ECL Enhanced Kit. Exposure time: 90s.