

Anti-CD248 antibody (18-150) (STJ114576)

STJ114576

GENERAL INFORMATION

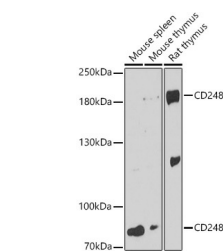
Product Type	Primary antibodies
Short Description	
Applications	WB/ELISA
Host/Source	Rabbit
Reactivity	Human/Mouse/Rat

PRODUCT PROPERTIES

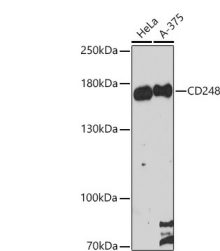
Clonality	Polyclonal
Clone ID	
Concentration	Lot specific
Conjugation	Unconjugated
Purification	Affinity purification
Dilution	WB:1:1000-1:5000
Range	ELISA:Recommended starting concentration is 1 µg/mL. Please optimize the concentration based on your specific assay requirements.
Formulation	PBS with 0.01% Thimerosal, 50% Glycerol, pH 7.3.
Isotype	IgG
Storage	Store at -20°C for up to 1 year from the date of receipt, and avoid repeat freeze-thaw cycles.
Instruction	

TARGET INFORMATION

Gene ID	57124
Gene Symbol	CD248
Uniprot ID	CD248_HUMAN
Immunogen	
Immunogen Region	18-150
Specificity	Recombinant fusion protein containing a sequence corresponding to amino acids 18-150 of human CD248 (NP_065137.1). QDPWAAEPRAACGPSSCYAL FPRRTFLAWRACRELGGD LATPRTPEEAQRVDSL VGAG PASRLWIGLQRQARQCQLQ
Immunogen Sequence	RPLRGFTWTTGDQDTAFTNW AQPASGGPCPAQRCVALEAS GEHRWLEGSCTLA



Western blot analysis of extracts of various cell lines, using CD248 antibody (STJ114576) at 1:3000 dilution. Secondary antibody: HRP Goat Anti-rabbit IgG (H+L) (STJ5000856) at 1:10000 dilution. Lysates/proteins: 25 µg per lane. Blocking buffer: 3% non-fat dry milk in TBST. Detection: ECL Enhanced Kit. Exposure time: 90s.



Western blot analysis of extracts of various cell lines, using CD248 antibody (STJ114576) at 1:3000 dilution. Secondary antibody: HRP Goat Anti-rabbit IgG (H+L) (STJ5000856) at 1:10000 dilution. Lysates/proteins: 25 µg per lane. Blocking buffer: 3% non-fat dry milk in TBST. Detection: ECL Enhanced Kit. Exposure time: 90s.

This product is suitable for in-vitro studies under the RESEARCH USE ONLY [RUO] licence. This product must not be used as for diagnostic or other medical purposes.
St John's Laboratory Ltd, Knowledge Dock Business Centre, University Way, London, E16 2RD | Tel: 0208 223 3081