

Anti-PSME3 antibody (200-254) (STJ114570)
STJ114570

GENERAL INFORMATION

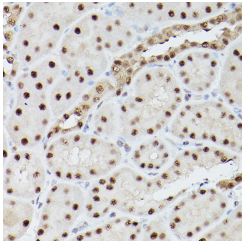
Product Type	Primary antibodies
Short Description	
Applications	WB/IHC-P/IF/ICC/ELISA
Host/Source	Rabbit
Reactivity	Human/Mouse/Rat

PRODUCT PROPERTIES

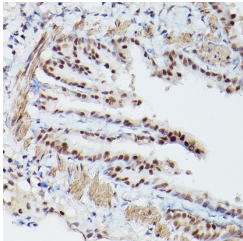
Clonality	Polyclonal
Clone ID	
Concentration	Lot specific
Conjugation	Unconjugated
Purification	Affinity purification
Dilution Range	WB:1:1000-1:2000 IHC-P:1:50-1:200 IF/ICC:1:50-1:200 ELISA:Recommended starting concentration is 1 µg/mL. Please optimize the concentration based on your specific assay requirements.
Formulation	PBS with 0.01% Thimerosal, 50% Glycerol, pH 7.3.
Isotype	IgG
Storage Instruction	Store at -20°C for up to 1 year from the date of receipt, and avoid repeat freeze-thaw cycles.

TARGET INFORMATION

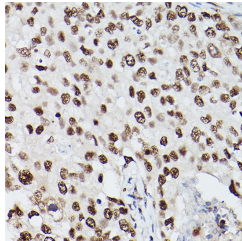
Gene ID	10197
Gene Symbol	PSME3
Uniprot ID	PSME3_HUMAN
Immunogen	
Immunogen Region	200-254
Specificity	A synthetic peptide corresponding to a sequence within amino acids 200-254 of human PSME3 (NP_005780.2).
Immunogen Sequence	EDYRRTVTEIDEKEYISLRL ISELRNQYVTLHDMILKNI EKIKRPRSSNAETLY



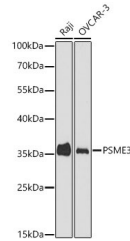
Immunohistochemistry analysis of PSME3 in paraffin-embedded rat kidney using PSME3 Rabbit polyclonal antibody (STJ114570) at dilution of 1:100 (40x lens). Perform microwave antigen retrieval with 10 mM PBS buffer pH 7.2 before commencing with immunohistochemistry staining protocol.



Immunohistochemistry analysis of PSME3 in paraffin-embedded mouse lung using PSME3 Rabbit polyclonal antibody (STJ114570) at dilution of 1:100 (40x lens). Perform microwave antigen retrieval with 10 mM PBS buffer pH 7.2 before commencing with immunohistochemistry staining protocol.



Immunohistochemistry analysis of PSME3 in paraffin-embedded human breast cancer using PSME3 Rabbit polyclonal antibody (STJ114570) at dilution of 1:100 (40x lens). Perform microwave antigen retrieval with 10 mM PBS buffer pH 7.2 before commencing with immunohistochemistry staining protocol.



Western blot analysis of various lysates using PSME3 Rabbit polyclonal antibody (STJ114570) at 1:3000 dilution. Secondary antibody: HRP Goat Anti-Rabbit IgG (H+L) (STJS000856) at 1:10000 dilution. Lysates/proteins: 25 µg per lane. Blocking buffer: 3 % nonfat dry milk in TBST. Detection: ECL Basic Kit. Exposure time: 30s.