

Anti-SLC1A5 antibody (1-100) (STJ114550)

STJ114550

GENERAL INFORMATION

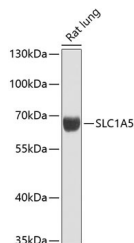
Product Type	Primary antibodies
Short Description	
Applications	WB/ELISA
Host/Source	Rabbit
Reactivity	Rat

PRODUCT PROPERTIES

Clonality	Polyclonal
Clone ID	
Concentration	Lot specific
Conjugation	Unconjugated
Purification	Affinity purification
Dilution Range	WB:1:500-1:2000 ELISA:Recommended starting concentration is 1 Mu g/mL. Please optimize the concentration based on your specific assay requirements.
Formulation	PBS with 0.02% Sodium Azide, 50% Glycerol, pH 7.3.
Isotype	IgG
Storage	Store at -20°C for up to 1 year from the date of receipt, and avoid repeat freeze-thaw cycles.
Instruction	

TARGET INFORMATION

Gene ID	6510
Gene Symbol	SLC1A5
Uniprot ID	AAAT_HUMAN
Immunogen	
Immunogen	1-100
Region	
Specificity	Recombinant fusion protein containing a sequence corresponding to amino acids 1-100 of human SLC1A5 (NP_005619.1).
Immunogen	MVADPPRDSKGLAAEPTAN GGLALASIEDQGAAAGGYCG SRDQVRRCLRANLLVLLTVV AVVAGVALGLGVSGAGGALA
Sequence	LGPERLSAFVFPGEALLRL



Western blot analysis of extracts of rat lung, using SLC1A5 antibody (STJ114550) at 1:1000 dilution. Secondary antibody: HRP Goat Anti-Rabbit IgG (H+L) (STJS000856) at 1:10000 dilution. Lysates/proteins: 25 Mu g per lane. Blocking buffer: 3% nonfat dry milk in TBST. Detection: ECL Basic Kit. Exposure time: 90s.

This product is suitable for in-vitro studies under the RESEARCH USE ONLY [RUO] licence. This product must not be used as for diagnostic or other medical purposes.
St John's Laboratory Ltd, Knowledge Dock Business Centre, University Way, London, E16 2RD | Tel: 0208 223 3081