

## Anti-WISP2 antibody (151-250) (STJ114415)

STJ114415

### GENERAL INFORMATION

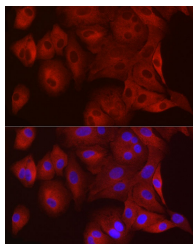
<b>Product Type</b>	Primary antibodies
<b>Short Description</b>	
<b>Applications</b>	WB/IF/ICC/ELISA
<b>Host/Source</b>	Rabbit
<b>Reactivity</b>	Human/Mouse/Rat

### PRODUCT PROPERTIES

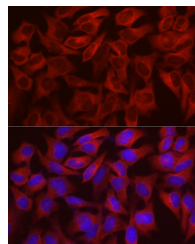
<b>Clonality</b>	Polyclonal
<b>Clone ID</b>	
<b>Concentration</b>	Lot specific
<b>Conjugation</b>	Unconjugated
<b>Purification</b>	Affinity purification
<b>Dilution Range</b>	WB:1:500-1:2000 IF/ICC:1:50-1:200 ELISA:Recommended starting concentration is 1 µg/mL. Please optimize the concentration based on your specific assay requirements.
<b>Formulation</b>	PBS with 0.05% Proclin300, 50% Glycerol, pH 7.3.
<b>Isotype</b>	IgG
<b>Storage</b>	Store at -20°C for up to 1 year from the date of receipt, and avoid repeat freeze-thaw cycles.
<b>Instruction</b>	

### TARGET INFORMATION

<b>Gene ID</b>	8839
<b>Gene Symbol</b>	CCN5
<b>Uniprot ID</b>	CCN5_HUMAN
<b>Immunogen</b>	
<b>Immunogen Region</b>	151-250
<b>Specificity</b>	Recombinant fusion protein containing a sequence corresponding to amino acids 151-250 of human WISP2 (NP_003872.1).
<b>Immunogen Sequence</b>	VEVLGKCCPEWVCGQGGGLG TQPLPAQGPQFSGLVSSLPP GVPCPEWSTAWGPCSTTCGL GMATRVSNQNRFCRLETQRR LCLSRPCPPSRGRSPQNSAF



Immunofluorescence analysis of A-549 cells using WISP2 rabbit polyclonal antibody (STJ114415) at dilution of 1:100 (40x lens). Blue: DAPI for nuclear staining.



Immunofluorescence analysis of HeLa cells using WISP2 rabbit polyclonal antibody (STJ114415) at dilution of 1:100 (40x lens). Blue: DAPI for nuclear staining.