

Anti-SULT1A1 antibody (1-295) (STJ114394)
STJ114394

GENERAL INFORMATION

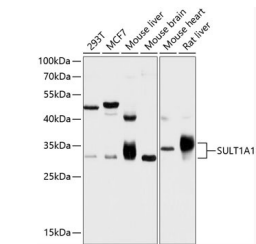
Product Type	Primary antibodies
Short Description	
Applications	WB/ELISA
Host/Source	Rabbit
Reactivity	Human/Mouse/Rat

PRODUCT PROPERTIES

Clonality	Polyclonal
Clone ID	
Concentration	Lot specific
Conjugation	Unconjugated
Purification	Affinity purification
Dilution	WB:1:500-1:2000
Range	ELISA:Recommended starting concentration is 1 μ g/mL. Please optimize the concentration based on your specific assay requirements.
Formulation	PBS with 0.02% Sodium Azide, 50% Glycerol, pH 7.3.
Isotype	IgG
Storage	Store at -20°C for up to 1 year from the date of receipt, and avoid repeat freeze-thaw cycles.
Instruction	

TARGET INFORMATION

Gene ID	6817
Gene Symbol	SULT1A1
Uniprot ID	ST1A1_HUMAN
Immunogen	
Immunogen Region	1-295
Specificity	Recombinant fusion protein containing a sequence corresponding to amino acids 1-295 of human SULT1A1 (NP_803565.1).
Immunogen Sequence	MELIQDTSRPPLEYVKGVPL IKYFAEALGPLQSFQARPD LLI STY PKSGTTWVSQILDM IYQGGDLEKCHRAPIFMRVP FLEFKAPGIPSGMETLKDTP APRLLKTHLPLALLPQTLLD QKV KVVYVARNAKDVAVSYY HFYHMAKVHPEPGTWDSFLE KFMVGEVSYGSWYQHVQEW ELSRTHPVLYLFYEDMKENP KREIQKILEFVGRSLPEETV DFVVQHTSFKEMKKNPMTN



Western blot analysis of extracts of various cell lines, using SULT1A1 antibody (STJ114394) at 1:1000 dilution. Secondary antibody: HRP Goat Anti-rabbit IgG (H+L) at 1:10000 dilution. Lysates/proteins: 25 μ g per lane. Blocking buffer: 3% nonfat dry milk in TBST. Detection: ECL Basic Kit. Exposure time: 10s.

This product is suitable for in-vitro studies under the RESEARCH USE ONLY [RUO] licence. This product must not be used as for diagnostic or other medical purposes.
St John's Laboratory Ltd, Knowledge Dock Business Centre, University Way, London, E16 2RD | Tel: 0208 223 3081