

Anti-SHH antibody (231-330) (STJ114377)

STJ114377

GENERAL INFORMATION

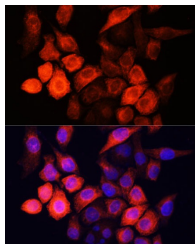
Product Type	Primary antibodies
Short Description	
Applications	WB/IF/ICC/ELISA
Host/Source	Rabbit
Reactivity	Human

PRODUCT PROPERTIES

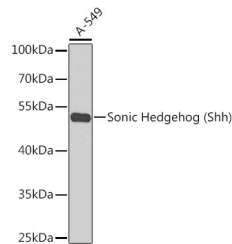
Clonality	Polyclonal
Clone ID	
Concentration	Lot specific
Conjugation	Unconjugated
Purification	Affinity purification
Dilution Range	WB:1:500-1:2000 IF/ICC:1:50-1:100 ELISA:Recommended starting concentration is 1 Mu g/mL. Please optimize the concentration based on your specific assay requirements.
Formulation	PBS with 0.02% Sodium Azide, 50% Glycerol, pH 7.3.
Isotype	IgG
Storage Instruction	Store at -20°C for up to 1 year from the date of receipt, and avoid repeat freeze-thaw cycles.

TARGET INFORMATION

Gene ID	6469
Gene Symbol	SHH
Uniprot ID	SHH_HUMAN
Immunogen	
Immunogen Region	231-330
Specificity	A synthetic peptide corresponding to a sequence within amino acids 231-330 of human Sonic Hedgehog (Shh) (NP_000184.1).
Immunogen Sequence	GRLLYSDFLTFLDRDDGAKK VFYVIETREPRERLLLTAAH LLFVAPHNDSATGEPEASSG SGPPSGGALGPRLFAFVRV PGQRVYVAERDGDRLRLPA



Immunofluorescence analysis of HeLa cells using Sonic Hedgehog (Sonic Hedgehog (Shh)) Polyclonal Antibody (STJ114377) at dilution of 1:100 (40x lens). Blue: DAPI for nuclear staining.



Western blot analysis of extracts of A-549 cells, using Sonic Hedgehog (Sonic Hedgehog (Shh)) antibody (STJ114377) at 1:1000 dilution. Secondary antibody: HRP-Goat Anti-Rabbit IgG (H+L) (STJS000856) at 1:10000 dilution. Lysates/proteins: 25 Mu g per lane. Blocking buffer: 3% nonfat dry milk in TBST. Detection: ECL Basic Kit. Exposure time: 90s.

This product is suitable for in-vitro studies under the RESEARCH USE ONLY [RUO] licence. This product must not be used as for diagnostic or other medical purposes.
St John's Laboratory Ltd, Knowledge Dock Business Centre, University Way, London, E16 2RD | Tel: 0208 223 3081