

## Anti-PPP1CA antibody (230-330) (STJ114342)

STJ114342

### GENERAL INFORMATION

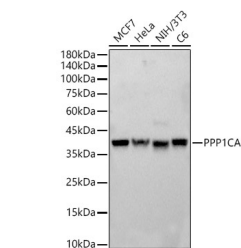
|                          |                    |
|--------------------------|--------------------|
| <b>Product Type</b>      | Primary antibodies |
| <b>Short Description</b> |                    |
| <b>Applications</b>      | WB/IF/ICC/ELISA    |
| <b>Host/Source</b>       | Rabbit             |
| <b>Reactivity</b>        | Human/Mouse/Rat    |

### PRODUCT PROPERTIES

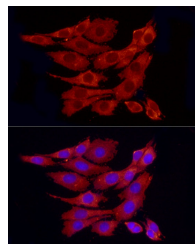
|                       |   |
|-----------------------|---|
| <b>Clonality</b>      | Polyclonal  |
| <b>Clone ID</b>       |   |
| <b>Concentration</b>  | Lot specific  |
| <b>Conjugation</b>    | Unconjugated  |
| <b>Purification</b>   | Affinity purification   |
| <b>Dilution Range</b> | WB:1:500-1:1000<br>IF/ICC:1:50-1:200<br>ELISA:Recommended starting concentration is 1 Mu g/mL. Please optimize the concentration based on your specific assay requirements. |
| <b>Formulation</b>    | PBS with 0.05% Proclin300, 50% Glycerol, pH 7.3.  |
| <b>Isotype</b>        | IgG   |
| <b>Storage</b>        | Store at -20°C for up to 1 year from the date of receipt, and avoid repeat freeze-thaw cycles.  |
| <b>Instruction</b>    |   |

### TARGET INFORMATION

|                           |   |
|---------------------------|---|
| <b>Gene ID</b>            | 5499  |
| <b>Gene Symbol</b>        | PPP1CA  |
| <b>Uniprot ID</b>         | PP1A_HUMAN  |
| <b>Immunogen</b>          |   |
| <b>Immunogen Region</b>   | 230-330   |
| <b>Specificity</b>        | Recombinant fusion protein containing a sequence corresponding to amino acids 230-330 of human PPP1CA (NP_002699.1).<br>EVVAKFLHKHDLICRAHQ VVEDGYEFFAKRQLVTLFSA PNYCGEFDNAGAMMSVDETL MCSFQILKPADKNKGKYGQF |
| <b>Immunogen Sequence</b> | SGLNPGGRPITPPRNSAKAK K  |



Western blot analysis of various lysates, using PPP1CA antibody (STJ114342) at 1:800 dilution. Secondary antibody: HRP Goat Anti-rabbit IgG (H+L) (STJ000856) at 1:10000 dilution. Lysates/proteins: 25 Mu g per lane. Blocking buffer: 3% non-fat dry milk in TBST. Detection: ECL Basic Kit. Exposure time: 0.5s.



Immunofluorescence analysis of PC-12 cells using PPP1CA rabbit polyclonal antibody (STJ114342) at dilution of 1:100 (40x lens). Blue: DAPI for nuclear staining.