

Anti-CXCL8 antibody (1-99) (STJ114326)

STJ114326

GENERAL INFORMATION

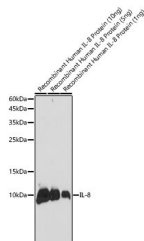
| | |
|--------------------------|--------------------|
| Product Type | Primary antibodies |
| Short Description | |
| Applications | WB/ELISA |
| Host/Source | Rabbit |
| Reactivity | Human |

PRODUCT PROPERTIES

| | |
|----------------------------|--|
| Clonality | Polyclonal |
| Clone ID | |
| Concentration | Lot specific |
| Conjugation | Unconjugated |
| Purification | Affinity purification |
| Dilution Range | WB:1:500-1:1000 ELISA:Recommended starting concentration is 1 µg/mL. Please optimize the concentration based on your specific assay requirements. |
| Formulation | PBS with 0.09% Sodium Azide, 50% Glycerol, pH 7.3. |
| Isotype | IgG |
| Storage Instruction | Store at -20°C for up to 1 year from the date of receipt, and avoid repeat freeze-thaw cycles. |

TARGET INFORMATION

| | |
|---------------------------|--|
| Gene ID | 3576 |
| Gene Symbol | CXCL8 |
| Uniprot ID | IL8_HUMAN |
| Immunogen | |
| Immunogen Region | 1-99 |
| Specificity | A synthetic peptide corresponding to a sequence within amino acids 1-99 of human IL8 (NP_000575.1). |
| Immunogen Sequence | MTSKLAVALLAFLISAALC EGAVLPKSAKELRCQCIKY SKPFHPKFIKELRVIESGPH CANTEIIVKLSDGRELCLDP KENWVQRVWEKFLKRAENS |



Western blot analysis of Recombinant Human IL-8 Protein using IL8 Rabbit polyclonal antibody (STJ114326) at 1:1000 dilution. Secondary antibody: HRP Goat Anti-Rabbit IgG (H+L) (STJ5000856) at 1:10000 dilution. Lysates/proteins: 10ng/5ng/1ng per lane. Blocking buffer: 3% nonfat dry milk in TBST. Detection: ECL Basic Kit. Exposure time: 10s.

This product is suitable for in-vitro studies under the RESEARCH USE ONLY [RUO] licence. This product must not be used as for diagnostic or other medical purposes.
St John's Laboratory Ltd, Knowledge Dock Business Centre, University Way, London, E16 2RD | Tel: 0208 223 3081