

Anti-CGB antibody (21-165) (STJ114293)

STJ114293

GENERAL INFORMATION

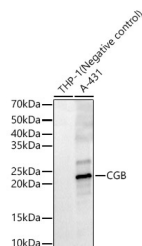
Product Type	Primary antibodies
Short Description	
Applications	WB/ELISA
Host/Source	Rabbit
Reactivity	Human/Mouse/Rat

PRODUCT PROPERTIES

Clonality	Polyclonal
Clone ID	
Concentration	Lot specific
Conjugation	Unconjugated
Purification	Affinity purification
Dilution	WB:1:1000-1:5000
Range	ELISA:Recommended starting concentration is 1 Mu g/mL. Please optimize the concentration based on your specific assay requirements.
Formulation	PBS with 0.02% Sodium Azide, 50% Glycerol, pH 7.3.
Isotype	IgG
Storage	Store at -20°C for up to 1 year from the date of receipt, and avoid repeat freeze-thaw cycles.
Instruction	

TARGET INFORMATION

Gene ID	1082/93659/94115
Gene Symbol	CGB3.CGB5.CGB8
Uniprot ID	CGB3_HUMAN
Immunogen	
Immunogen Region	21-165
Specificity	Recombinant fusion protein containing a sequence corresponding to amino acids 21-165 of human CGB (NP_000728.1).
Immunogen Sequence	SKEPLRPRCRPINATLAVEK EGCPVCITVNTTICAGYCPT MTRVLQGVLPALPQVVCNYR DVRFESIRLPGPCRGNPVV SYAVALSCQCALCRRSTTDC GGPKDHPLTCDPRFQDSSS SKAPPPSLPSPSRLPGPSDT PILPQ



Western blot analysis of various lysates, using CGB Rabbit polyclonal antibody (STJ114293) at 1:2000 dilution. Secondary antibody: HRP Goat Anti-Rabbit IgG (H+L) (STJS000856) at 1:10000 dilution. Lysates/proteins: 25 Mu g per lane. Blocking buffer: 3% nonfat dry milk in TBST. Detection: ECL Enhanced Kit. Exposure time: 60s.

This product is suitable for in-vitro studies under the RESEARCH USE ONLY [RUO] licence. This product must not be used as for diagnostic or other medical purposes.
St John's Laboratory Ltd, Knowledge Dock Business Centre, University Way, London, E16 2RD | Tel: 0208 223 3081