

Anti-ALPL antibody (230-440) (STJ114272)

STJ114272

GENERAL INFORMATION

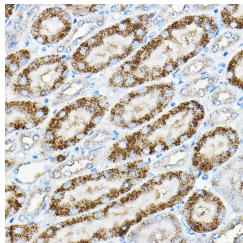
Product Type	Primary antibodies
Short Description	
Applications	WB/IHC-P/ELISA
Host/Source	Rabbit
Reactivity	Human/Mouse/Rat

PRODUCT PROPERTIES

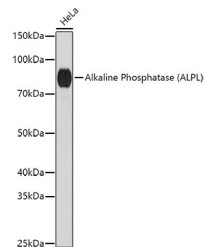
Clonality	Polyclonal
Clone ID	
Concentration	Lot specific
Conjugation	Unconjugated
Purification	Affinity purification
Dilution	WB:1:500-1:1000
Range	IHC-P:1:50-1:200 ELISA:Recommended starting concentration is 1 μ g/mL. Please optimize the concentration based on your specific assay requirements.
Formulation	PBS with 0.09% Sodium Azide, 50% Glycerol, pH 7.3.
Isotype	IgG
Storage Instruction	Store at -20°C for up to 1 year from the date of receipt, and avoid repeat freeze-thaw cycles.

TARGET INFORMATION

Gene ID	249
Gene Symbol	ALPL
Uniprot ID	PPBT_HUMAN
Immunogen	
Immunogen Region	230-440
Specificity	Recombinant fusion protein containing a sequence corresponding to amino acids 230-440 of human Alkaline Phosphatase (ALPL) (NP_000469.3).
Immunogen Sequence	NKTDVEYESDEKARGTRLDG LDLVDTWKSFKPRYKSHFI WNRTELLDPHNVDYLLGL FEPGDMQYELNRNNVTDPSL SEMVVAIQILRKNPKGFFL LVEGGRIDHGHHEGKAKQAL HEAVEMDRAIGQAGSLTSSE DTLTVVTADHSHVFTFGGYT PRGNSIFGLAPMLSDTDKPK FTAILYGNPGYKVVGGERE NVSMVDYAHNN



Immunohistochemistry analysis of paraffin-embedded mouse kidney using Alkaline Phosphatase (Alkaline Phosphatase (ALPL)) Rabbit polyclonal antibody (STJ114272) at dilution of 1:200 (40x lens). Perform high pressure antigen retrieval with 10 mM citrate buffer pH 6.0 before commencing with immunohistochemistry staining protocol.



Western blot analysis of extracts of HeLa cells, using Alkaline Phosphatase (ALPL) antibody (STJ114272) at 1:1000 dilution. Secondary antibody: HRP Goat Anti-Rabbit IgG (H+L) (STJS000856) at 1:10000 dilution. Lysates/proteins: 25 μ g per lane. Blocking buffer: 3% nonfat dry milk in TBST. Detection: ECL Basic Kit. Exposure time: 180s.

This product is suitable for in-vitro studies under the RESEARCH USE ONLY [RUO] licence. This product must not be used as for diagnostic or other medical purposes.
St John's Laboratory Ltd, Knowledge Dock Business Centre, University Way, London, E16 2RD | Tel: 0208 223 3081