

Anti-F2 antibody (364-622) (STJ114260)

STJ114260

GENERAL INFORMATION

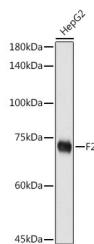
Product Type	Primary antibodies
Short Description	
Applications	WB/ELISA
Host/Source	Rabbit
Reactivity	Human

PRODUCT PROPERTIES

Clonality	Polyclonal
Clone ID	
Concentration	Lot specific
Conjugation	Unconjugated
Purification	Affinity purification
Dilution	WB:1:100-1:500
Range	ELISA:Recommended starting concentration is 1 Mu g/mL. Please optimize the concentration based on your specific assay requirements.
Formulation	PBS with 0.01% Thimerosal, 50% Glycerol, pH 7.3.
Isotype	IgG
Storage	Store at -20°C for up to 1 year from the date of receipt, and avoid repeat freeze-thaw cycles.
Instruction	

TARGET INFORMATION

Gene ID	2147
Gene Symbol	F2
Uniprot ID	THRB_HUMAN
Immunogen	
Immunogen Region	364-622
Specificity	Recombinant fusion protein containing a sequence corresponding to amino acids 364-622 of human F2 (NP_000497.1). IVEGSDAEIGMSPWQVMLFR KSPQELLCGASLISDRWVLT AAHCLLYPPWDKNFTENDLL VRIGKHSRTRYERNIEKISM LEKIYIHPRYNWRENLDROI ALMKLKKPVAFSDYIHPVCL PDRETAASLLQAGYKGRVTG WGNLKETWTANVGKGQPSVL QVNLPIVERPVCKDSTRIR ITDNMFCAGYKPDEGKRGA CEGDSGGPFVMKSPFNRRWY QMGIVSWGEGCDRDGKYGF
Immunogen Sequence	



Western blot analysis of lysates from HepG2 cells, using F2 Rabbit polyclonal antibody (STJ114260) at 1:500 dilution. Secondary antibody: HRP Goat Anti-Rabbit IgG (H+L) (STJ5000856) at 1:10000 dilution. Lysates/proteins: 25 Mu g per lane. Blocking buffer: 3% nonfat dry milk in TBST. Detection: ECL Basic Kit. Exposure time: 180s.

This product is suitable for in-vitro studies under the RESEARCH USE ONLY [RUO] licence. This product must not be used as for diagnostic or other medical purposes.
St John's Laboratory Ltd, Knowledge Dock Business Centre, University Way, London, E16 2RD | Tel: 0208 223 3081