

Anti-SMAD7 antibody (220-420) (STJ114223)

STJ114223

GENERAL INFORMATION

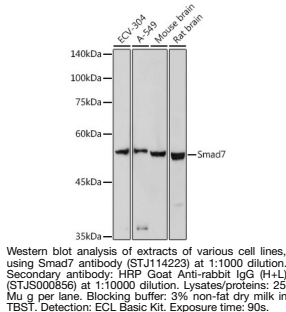
Product Type	Primary antibodies
Short Description	
Applications	WB/IF/ICC/ELISA
Host/Source	Rabbit
Reactivity	Human/Mouse/Rat

PRODUCT PROPERTIES

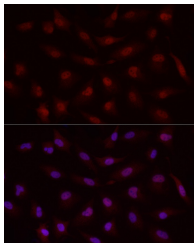
Clonality	Polyclonal
Clone ID	
Concentration	Lot specific
Conjugation	Unconjugated
Purification	Affinity purification
Dilution	WB:1:500-1:1000
Range	IF/CC:1:50-1:200 ELISA:Recommended starting concentration is 1 μ g/mL. Please optimize the concentration based on your specific assay requirements.
Formulation	PBS with 0.05% Proclin300, 50% Glycerol, pH 7.3.
Isotype	IgG
Storage Instruction	Store at -20°C for up to 1 year from the date of receipt, and avoid repeat freeze-thaw cycles.

TARGET INFORMATION

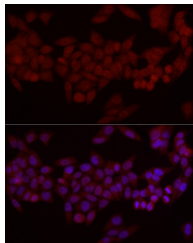
Gene ID	4092
Gene Symbol	SMAD7
Uniprot ID	SMAD7_HUMAN
Immunogen	
Immunogen Region	220-420
Specificity	A synthetic peptide corresponding to a sequence within amino acids 220-420 of human Smad7 (NP_005895.1).
Immunogen Sequence	KPTADCPDVPSSAETGGTN YLAPGGLSDSQLLLEPGDRS HWCVVAYWEEKTRVGRLYCV QEPSLDIFYDLPQGNGFCLG QLNSDNKSQLVQKVRKIGC GIQLTREVDGVVYNRSSYP IFIKSATLDNPDSRTLLVHK VFPGFSAIKAFDYEKAYSLQR PNDHEFMQQPWTGFTVQISF VKGWGQCYTRQFISSPCWL E



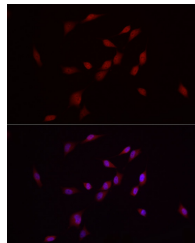
Immunofluorescence analysis of A-549 cells using Smad7 rabbit polyclonal antibody (STJ114223) at dilution of 1:50 (40x lens). Blue: DAPI for nuclear staining.



Immunofluorescence analysis of HeLa cells using Smad7 rabbit polyclonal antibody (STJ114223) at dilution of 1:50 (40x lens). Blue: DAPI for nuclear staining.



Immunofluorescence analysis of NIH/3T3 cells using Smad7 rabbit polyclonal antibody (STJ114223) at dilution of 1:50 (40x lens). Blue: DAPI for nuclear staining.



This product is suitable for in-vitro studies under the RESEARCH USE ONLY [RUO] licence. This product must not be used as for diagnostic or other medical purposes.
St John's Laboratory Ltd, Knowledge Dock Business Centre, University Way, London, E16 2RD | Tel: 0208 223 3081