

Anti-DOT1L antibody (1438-1537) (STJ114209)

STJ114209

GENERAL INFORMATION

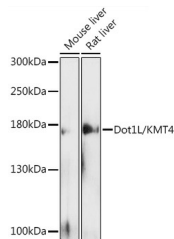
Product Type	Primary antibodies
Short Description	
Applications	WB/ELISA
Host/Source	Rabbit
Reactivity	Human/Mouse/Rat

PRODUCT PROPERTIES

Clonality	Polyclonal
Clone ID	
Concentration	Lot specific
Conjugation	Unconjugated
Purification	Affinity purification
Dilution Range	WB:1:500-1:2000 ELISA:Recommended starting concentration is 1 Mu g/mL. Please optimize the concentration based on your specific assay requirements.
Formulation	PBS with 0.01% Thimerosal, 50% Glycerol, pH 7.3.
Isotype	IgG
Storage Instruction	Store at -20°C for up to 1 year from the date of receipt, and avoid repeat freeze-thaw cycles.

TARGET INFORMATION

Gene ID	84444
Gene Symbol	DOT1L
Uniprot ID	DOT1L_HUMAN
Immunogen	
Immunogen Region	1438-1537
Specificity	A synthetic peptide corresponding to a sequence within amino acids 1438-1537 of human Dot1L/KMT4 (NP_115871.1).
Immunogen Sequence	LLSGPGLAPAASSAGGAASS AQTHRSFLGPFPQPQFALG PMSLQANLGSVAGSSVLQSL FSSVPAAGLVHVSSAATRL TNSHAMGSFSGVAGGTVGGN



Western blot analysis of extracts of various cell lines, using Dot1L/KMT4 antibody (STJ114209) at 1:500 dilution. Secondary antibody: HRP Goat Anti-rabbit IgG (H+L) at 1:10000 dilution. Lysates/proteins: 25ug per lane. Blocking buffer: 3% nonfat dry milk in TBST. Detection: ECL Enhanced Kit. Exposure time: 60s.

This product is suitable for in-vitro studies under the RESEARCH USE ONLY [RUO] licence. This product must not be used as for diagnostic or other medical purposes.
St John's Laboratory Ltd, Knowledge Dock Business Centre, University Way, London, E16 2RD | Tel: 0208 223 3081