

Anti-AP2S1 antibody (1-142) (STJ114160)
STJ114160

GENERAL INFORMATION

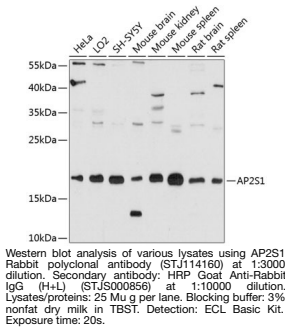
Product Type	Primary antibodies
Short Description	
Applications	WB/ELISA
Host/Source	Rabbit
Reactivity	Human/Mouse/Rat

PRODUCT PROPERTIES

Clonality	Polyclonal
Clone ID	
Concentration	Lot specific
Conjugation	Unconjugated
Purification	Affinity purification
Dilution	WB: 1:500-1:2000
Range	ELISA: Recommended starting concentration is 1 µg/mL. Please optimize the concentration based on your specific assay requirements.
Formulation	PBS with 0.01% Thimerosal, 50% Glycerol, pH 7.3.
Isotype	IgG
Storage	Store at -20°C for up to 1 year from the date of receipt, and avoid repeat freeze-thaw cycles.
Instruction	

TARGET INFORMATION

Gene ID	1175
Gene Symbol	AP2S1
Uniprot ID	AP2S1_HUMAN
Immunogen	
Immunogen Region	1-142
Specificity	Recombinant fusion protein containing a sequence corresponding to amino acids 1-142 of human AP2S1 (NP_004060.2). MIRFILIQNRAGKTRLAKWY MQFDDDEKQKLIIEVHAVVT VRDAKHTNFVEFRNFKIYR RYAGLYFCICVDVNDNNLAY
Immunogen Sequence	LEAIHNFVEVLNEYFHNVCE LDLVFNFYKVYTVDEMFLA GEIRETSQTKVLKQLMLQS LE



This product is suitable for in-vitro studies under the RESEARCH USE ONLY [RUO] licence. This product must not be used as for diagnostic or other medical purposes.
St John's Laboratory Ltd, Knowledge Dock Business Centre, University Way, London, E16 2RD | Tel: 0208 223 3081