

Anti-CTSL antibody (114-333) (STJ114092)

STJ114092

GENERAL INFORMATION

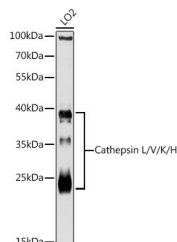
Product Type	Primary antibodies
Short Description	
Applications	WB/ELISA
Host/Source	Rabbit
Reactivity	Human/Rat

PRODUCT PROPERTIES

Clonality	Polyclonal
Clone ID	
Concentration	Lot specific
Conjugation	Unconjugated
Purification	Affinity purification
Dilution	WB:1:1000-1:5000
Range	ELISA:Recommended starting concentration is 1 Mu g/mL. Please optimize the concentration based on your specific assay requirements.
Formulation	PBS with 0.01% Thimerosal, 50% Glycerol, pH 7.3.
Isotype	IgG
Storage	Store at -20°C for up to 1 year from the date of receipt, and avoid repeat freeze-thaw cycles.
Instruction	

TARGET INFORMATION

Gene ID	1514
Gene Symbol	CTSL
Uniprot ID	CATL1_HUMAN
Immunogen	
Immunogen Region	114-333
Specificity	Recombinant fusion protein containing a sequence corresponding to amino acids 114-333 of human Cathepsin L/V/K/H (NP_001903.1).
Immunogen Sequence	APRSVDWREKGYVTPVKNQG QCGSCWAFSATGALEGQMFR KTGRLLSLSEQLVDCSGPQ GNEGCNGGLMDYAFQYVQDN GGLDSEESYPYEATEESCKY NPKYSVANDTGFVDIPKQEK ALMKAVATVGPISVAIDAGH ESFLFYKEGIYFEPDCSSED MDHGVLVWGYGFESTESDNN KYWLVKNSWGEEWGMGGYVK MAKDRRNHCGIASAASYPTV



Western blot analysis of lysates from LO2 cells, using Cathepsin L/V/K/H Rabbit polyclonal antibody (STJ114092) at 1:3000 dilution. Secondary antibody: HRP Goat Anti-Rabbit IgG (H+L) (STJ5000856) at 1:10000 dilution. Lysates/proteins: 25 Mu g per lane. Blocking buffer: 3% nonfat dry milk in TBST. Detection: ECL Basic Kit. Exposure time: 30s.

This product is suitable for in-vitro studies under the RESEARCH USE ONLY [RUO] licence. This product must not be used as for diagnostic or other medical purposes.

St John's Laboratory Ltd, Knowledge Dock Business Centre, University Way, London, E16 2RD | Tel: 0208 223 3081