

Anti-MED21 antibody (1-144) (STJ114061)

STJ114061

GENERAL INFORMATION

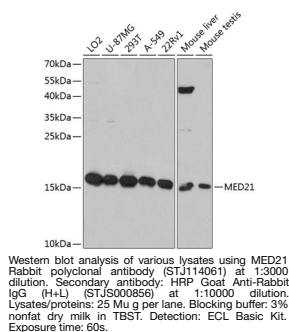
Product Type	Primary antibodies
Short Description	
Applications	WB/ELISA
Host/Source	Rabbit
Reactivity	Human/Mouse

PRODUCT PROPERTIES

Clonality	Polyclonal
Clone ID	
Concentration	Lot specific
Conjugation	Unconjugated
Purification	Affinity purification
Dilution	WB: 1:500-1:2000
Range	ELISA: Recommended starting concentration is 1 µg/mL. Please optimize the concentration based on your specific assay requirements.
Formulation	PBS with 0.01% Thimerosal, 50% Glycerol, pH 7.3.
Isotype	IgG
Storage	Store at -20°C for up to 1 year from the date of receipt, and avoid repeat freeze-thaw cycles.
Instruction	

TARGET INFORMATION

Gene ID	9412
Gene Symbol	MED21
Uniprot ID	MED21_HUMAN
Immunogen	
Immunogen Region	1-144
Specificity	Recombinant fusion protein containing a sequence corresponding to amino acids 1-144 of human MED21 (NP_004255.2). MADRLTQLQDAVNSLADQFC NAIGVLQCCGPPASFNNIQT AINKDQPANPTEEYAQLFAA LIARTAKDIDVLIDSLPSEE
Immunogen Sequence	STAALQAASLYKLEENHEA ATCLEDDVYRGDMLEKIQS ALADIAQSQLKTRSGTHSQS LPDS



This product is suitable for in-vitro studies under the RESEARCH USE ONLY [RUO] licence. This product must not be used as for diagnostic or other medical purposes.
St John's Laboratory Ltd, Knowledge Dock Business Centre, University Way, London, E16 2RD | Tel: 0208 223 3081