

# Anti-COPZ1 antibody (1-177) (STJ114041)

STJ114041

## GENERAL INFORMATION

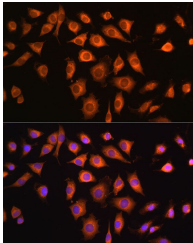
<b>Product Type</b>	Primary antibodies
<b>Short Description</b>	
<b>Applications</b>	WB/IF/ICC/ELISA
<b>Host/Source</b>	Rabbit
<b>Reactivity</b>	Human/Mouse

## PRODUCT PROPERTIES

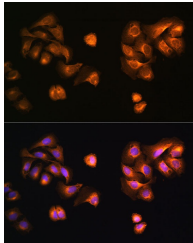
<b>Clonality</b>	Polyclonal
<b>Clone ID</b>	
<b>Concentration</b>	Lot specific
<b>Conjugation</b>	Unconjugated
<b>Purification</b>	Affinity purification
<b>Dilution</b>	WB:1:500-1:2000
<b>Range</b>	IF/CC:1:50-1:200
	ELISA:Recommended starting concentration is 1 $\mu$ g/mL. Please optimize the concentration based on your specific assay requirements.
<b>Formulation</b>	PBS with 0.01% Thimerosal, 50% Glycerol, pH 7.3.
<b>Isotype</b>	IgG
<b>Storage Instruction</b>	Store at -20°C for up to 1 year from the date of receipt, and avoid repeat freeze-thaw cycles.

## TARGET INFORMATION

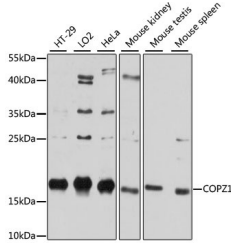
<b>Gene ID</b>	22818
<b>Gene Symbol</b>	COPZ1
<b>Uniprot ID</b>	COPZ1_HUMAN
<b>Immunogen</b>	
<b>Immunogen Region</b>	1-177
<b>Specificity</b>	Recombinant fusion protein containing a sequence corresponding to amino acids 1-177 of human COPZ1 (NP_057141.1).
<b>Immunogen Sequence</b>	MEALILEPSLYTVKAILILD NDGDRLEAKYYDDTYPVKE QKAFENIFNKTHRTDSEIA LLEGLTVVYKSSIDLYFYVI GSSYENELMLMAVLNCLFDS LSQMLRKNEKRALLENMEG LFLAVDEIVDGGVILESDPQ QVWHRVALRGEDVPLTEQTV SQVLQSAKEIKWSLLR



Immunofluorescence analysis of L929 cells using COPZ1 Rabbit polyclonal antibody (STJ114041) at dilution of 1:100. Secondary antibody: Cy3 Goat Anti-Rabbit IgG (H+L) at 1:500 dilution. Blue: DAPI for nuclear staining.



Immunofluorescence analysis of U2OS cells using COPZ1 Rabbit polyclonal antibody (STJ114041) at dilution of 1:100. Secondary antibody: Cy3 Goat Anti-Rabbit IgG (H+L) at 1:500 dilution. Blue: DAPI for nuclear staining.



Western blot analysis of various lysates using COPZ1 Rabbit polyclonal antibody (STJ114041) at 1:3000 dilution. Secondary antibody: HRP Goat Anti-Rabbit IgG (H+L) (STJ500856) at 1:10000 dilution. Lysates/proteins: 25  $\mu$ g per lane. Blocking buffer: 3% nonfat dry milk in TBST. Detection: ECL Basic Kit. Exposure time: 10s.

This product is suitable for in-vitro studies under the RESEARCH USE ONLY [RUO] licence. This product must not be used as for diagnostic or other medical purposes.  
St John's Laboratory Ltd, Knowledge Dock Business Centre, University Way, London, E16 2RD | Tel: 0208 223 3081