

Anti-CYP26B1 antibody (213-512) (STJ114035)

STJ114035

GENERAL INFORMATION

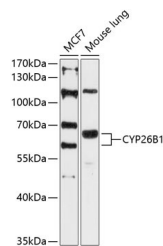
| | |
|--------------------------|--------------------|
| Product Type | Primary antibodies |
| Short Description | |
| Applications | WB/ELISA |
| Host/Source | Rabbit |
| Reactivity | Human/Mouse |

PRODUCT PROPERTIES

| | |
|----------------------|---|
| Clonality | Polyclonal |
| Clone ID | |
| Concentration | Lot specific |
| Conjugation | Unconjugated |
| Purification | Affinity purification |
| Dilution | WB:1:500-1:2000 |
| Range | ELISA:Recommended starting concentration is 1 µg/mL. Please optimize the concentration based on your specific assay requirements. |
| Formulation | PBS with 0.01% Thimerosal, 50% Glycerol, pH 7.3. |
| Isotype | IgG |
| Storage | Store at -20°C for up to 1 year from the date of receipt, and avoid repeat freeze-thaw cycles. |
| Instruction | |

TARGET INFORMATION

| | |
|---------------------------|--|
| Gene ID | 56603 |
| Gene Symbol | CYP26B1 |
| Uniprot ID | CP26B_HUMAN |
| Immunogen | |
| Immunogen Region | 213-512 |
| Specificity | Recombinant fusion protein containing a sequence corresponding to amino acids 213-512 of human CYP26B1 (NP_063938.1). |
| Immunogen Sequence | VYQQFVDNVFSLPVDLPFSG YRRGIQARQILQKGLEKAIR EKLQCTQGKDYLDALDLLIE SSKEHGKEMTMQELKDGTLLE LIFAAYATTASASTSLIMQL LKHPTVLEKLRDELRAHGIL HSGGCPCEGTLRLDTLSGLR YLDCVIKEVMRLFTPISGGY RTVLQTFELDGFQIPKGWSV MYSIRDTHDTAPVFKDVNVF DPDRFSQARSEDKDGRFHYL PFGGGVVRTCLGKHLAKLFL |



Western blot analysis of various lysates using CYP26B1 Rabbit polyclonal antibody (STJ114035) at 1:3000 dilution. Secondary antibody: HRP Goat Anti-Rabbit IgG (H+L) (STJS000856) at 1:10000 dilution. Lysates/proteins: 25 µg per lane. Blocking buffer: 3% nonfat dry milk in TBST. Detection: ECL Enhanced Kit. Exposure time: 90s.

This product is suitable for in-vitro studies under the RESEARCH USE ONLY [RUO] licence. This product must not be used as for diagnostic or other medical purposes.
St John's Laboratory Ltd, Knowledge Dock Business Centre, University Way, London, E16 2RD | Tel: 0208 223 3081