

Anti-STAT1 antibody (650-750) (STJ113973)

STJ113973

GENERAL INFORMATION

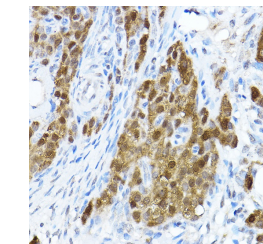
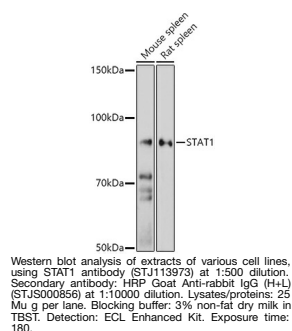
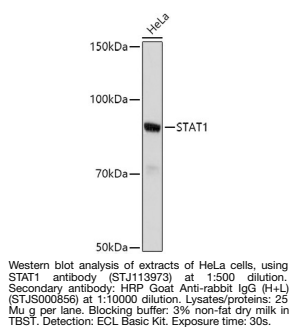
Product Type	Primary antibodies
Short Description	
Applications	WB/IHC-P/IF/ICC/IP/ELISA
Host/Source	Rabbit
Reactivity	Human/Mouse/Rat

PRODUCT PROPERTIES

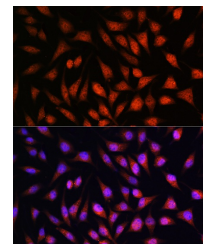
Clonality	Polyclonal
Clone ID	
Concentration	Lot specific
Conjugation	Unconjugated
Purification	Affinity purification
Dilution Range	WB:1:500-1:1000 IHC-P:1:50-1:200 IF/ICC:1:50-1:200 IP:0.5 Mu g-4 Mu g antibody for 200 Mu g-400 Mu g extracts of whole cells ELISA:Recommended starting concentration is 1 Mu g/mL. Please optimize the concentration based on your specif
Formulation	PBS with 0.01% Thimerosal, 50% Glycerol, pH 7.3.
Isotype	IgG
Storage	Store at -20°C for up to 1 year from the date of receipt, and avoid repeat freeze-thaw cycles.
Instruction	

TARGET INFORMATION

Gene ID	6772
Gene Symbol	STAT1
Uniprot ID	STAT1_HUMAN
Immunogen	
Immunogen	650-750
Region	
Specificity	A synthetic peptide corresponding to a sequence within amino acids 650-750 of human STAT1 (NP_009330.1).
Immunogen	NYKVMAAENIPENPLKYLTP NIDKDHAFGKYYSRPKEAPE PMELDGPKGTYIKTELISV SEVHPSRLQTDDNLLPMSPE
Sequence	EFDEVSRIVGSVEFDSMMNT V



Immunohistochemistry analysis of paraffin-embedded rat ovary using STAT1 rabbit polyclonal antibody (STJ113973) at dilution of 1:100 (40x lens). Perform high pressure antigen retrieval with 10 mM citrate buffer pH 6, 0 before commencing with immunohistochemistry staining protocol.



Immunofluorescence analysis of L929 cells using STAT1 rabbit polyclonal antibody (STJ113973) at dilution of 1:100. Blue: DAPI for nuclear staining.

This product is suitable for in-vitro studies under the RESEARCH USE ONLY [RUO] licence. This product must not be used as for diagnostic or other medical purposes.
St John's Laboratory Ltd, Knowledge Dock Business Centre, University Way, London, E16 2RD | Tel: 0208 223 3081